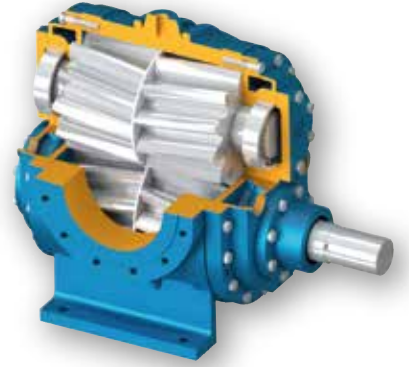


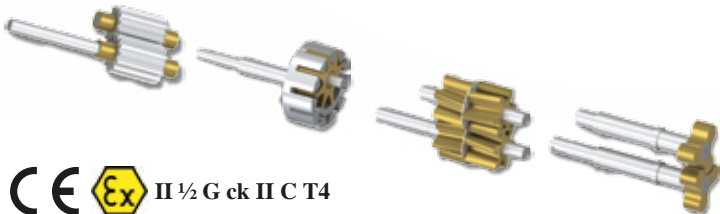


# YILDIZ POMPA

Makina Sanayi Ticaret Limited Şirketi



## HELİS DİŞLİ POMPALAR HELICAL GEAR PUMPS



CE Ex II ½ G ck II C T4

*Türkiye'de Kalite ve Güvenin Sembolü*

[www.yildizpompa.com.tr](http://www.yildizpompa.com.tr)

# KULLANIM ALANLARI & MALZEME ÖZELLİKLERİ

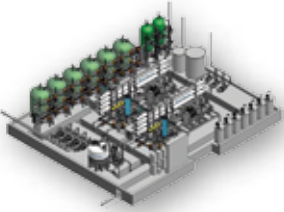
## USE AREA & MATERIAL PROPERTIES

### KULLANIM ALANLARI

- Endüstriyel uygulamalarda,
- Melas,
- Petrol,
- Yakıt,
- Yüksek hacim transferlerinde.

### USE AREA

- Industrial applications
- Transfer of molasses,
- Petroleum,
- Fuel,
- High volume transfer.

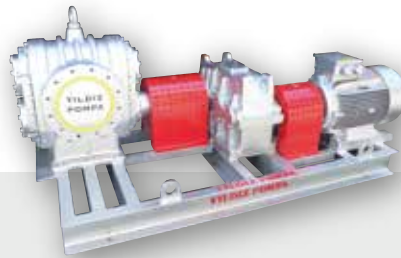


### MALZEME ÖZELLİKLERİ

- Pompa Gövdesi, Kapaklar, Dişliler : Dökme (pik) demir, çelik döküm, paslanmaz AISI 304 / 316 döküm, sfero döküm
- Yataklar : Snbz 12 bronz, rulman, karbon grafit, ina burc
- Sızdırmazlık: Yumuşak salmastra, mekanik salmastra.

### MATERIAL PROPERTIES

- Pump Body, covers and gears: Cast iron, steel cast, stainless AISI 304 / 316 cast.
- Bearings: Snbz 12 bronze, bearing, carbon graphite, Ina bushing bearing.
- Sealing: Soft seal, mechanical seal

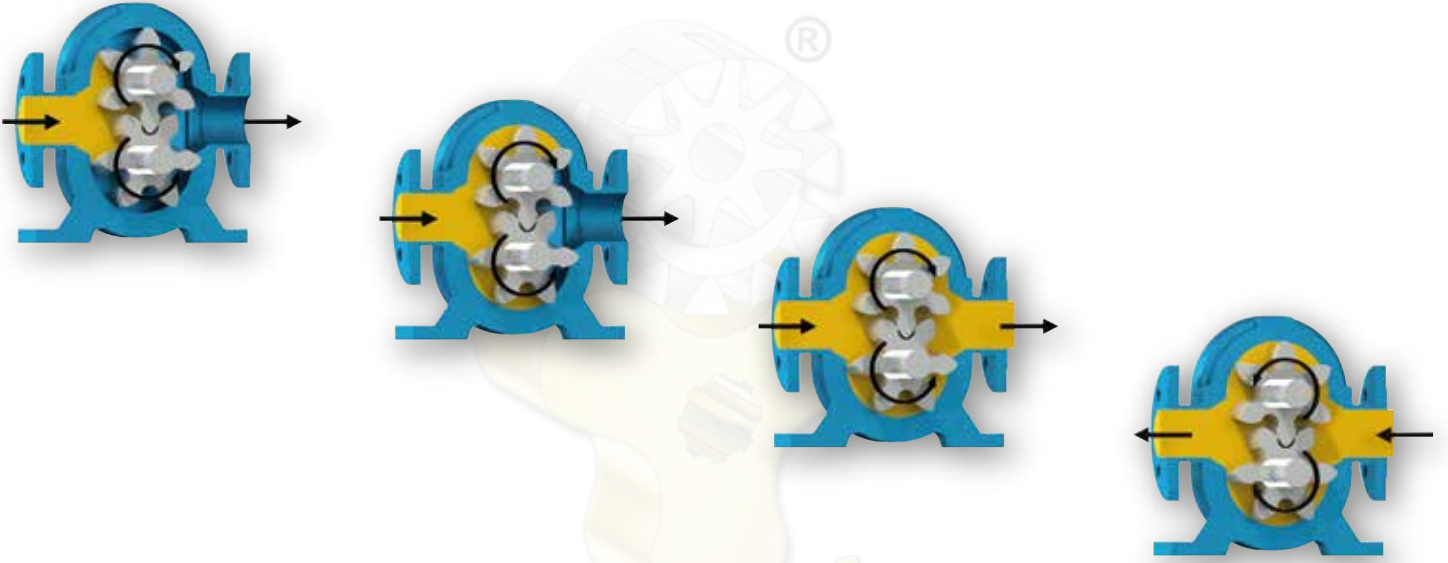


# ÇALIŞMA PRENSİBİ

## WORKING PRINCIPLE

**YHL** serisi pompalar yatay milli, 180° giriş çıkışlı, helis dişli pompalardır. İki tane hareketli aynı çeviren ve çevrilen dişlisi bulunmaktadır. Pompa mili, motordan almış olduğu dairesel hareketi, mil üzerindeki dişli (çeviren) ile, diğer dişliye (çevrilen) ters yönde iletir. Dişliler birbirinden ayrılırken, dişlilerin arasına sıvı dolar. Bu sıvı, dönme hareketi ile basma bölgesine taşınarak, dişliler iç içe girerken basma kanalına atılır. Sıvının viskozitesine bağlı olarak 15 Bar'a kadar basınç elde edilir.

Helis dişli olması nedeniyle, sessiz çalışması istenen ve kesintisiz debiye ihtiyaç duyulan yerler için ve fazla koyu olmayan, orta basınçlı ortamlarda kullanılabilir.



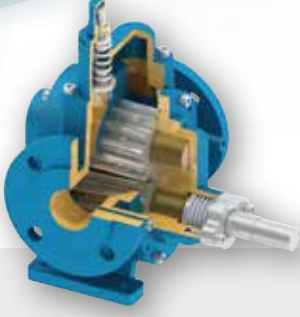
Pumps in **YHL** Series are with horizontal shaft, 180° port position, and have two external helical gears. Pump shaft transmits circular movement with own gear to other gear on inverse side. While gears leave from other, liquid get full between gears. While gears become close, this liquid moves with rotary motion to outlet. We can have pressure until 15 Bar according to liquid viscose.

Also they are good in where there is a need for uninterrupted capacity for less viscous and medium pressure places.



# POMPA MONTAJ ÇEŞİTLERİ

## PUMP MOUNTING TYPES



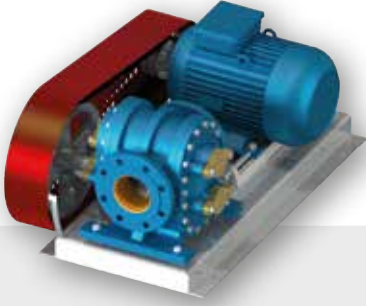
**Bypasslı Pompa**

Pump with Pressure Relief Valve on Casing



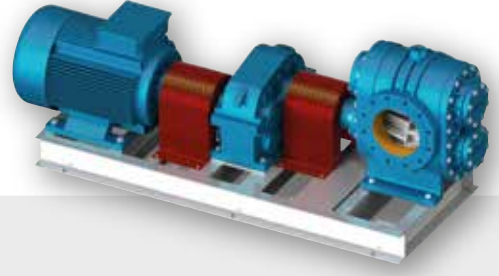
**Çeketli Pompa**

Jecketed Pump



**Kayış Kasnak Akupleli**

Belt Pulley Coupling



**Redüktör Akupleli**

Gearbox Drive

## ÇALIŞMA ALANLARINDAKİ POMPALARIMIZ

### OUR PUMPS IN WORKING AREAS



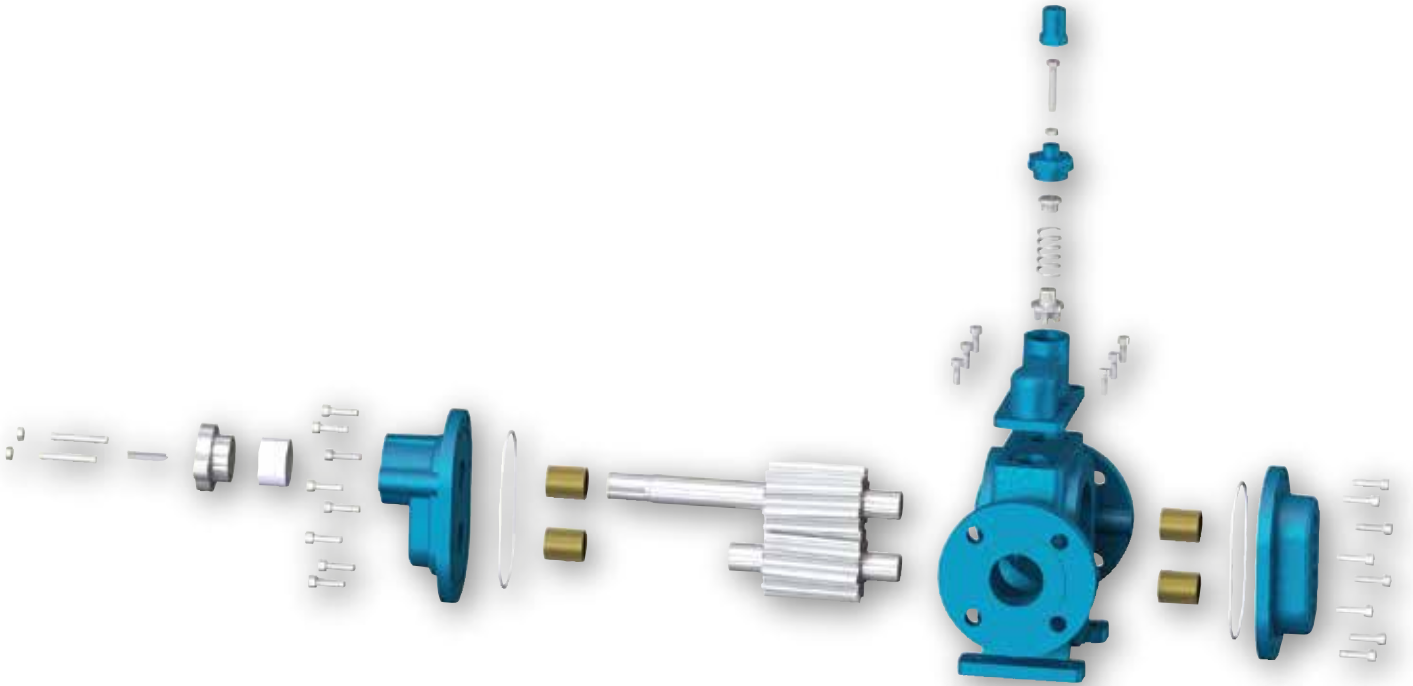
# POMPA ÖZELLİKLERİ

## PUMP SPECIFICATIONS

Pompa Kodu Pump Code	Pompa Debisi Pump Flow m <sup>3</sup> /h	Basınç Pressure Bar	Viskozite Viscosity cst	Hız Speed rpm	Max. Sıcaklık Max. Temperature °C
YHL 2	12	10	10 - 550	900	200
YHL 2½	38	15	10 - 55.000	450	350
YHL 3	38	15	10 - 55.000	450	350
YHL 4	76	15	10 - 55.000	450	200
YHL 8	250	15	10 - 55.000	450	200
YHL 10	250	15	10 - 55.000	450	200

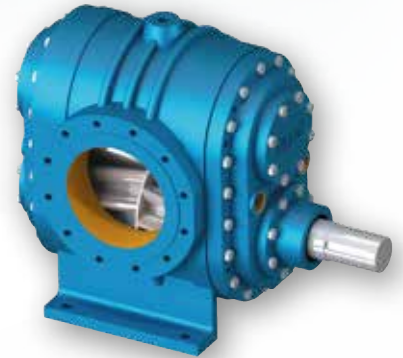
## POMPA DETAYLARI

### PUMP DETAILS





[www.yildizpompa.com.tr](http://www.yildizpompa.com.tr)



**YILDIZ POMPA**  
Makina Sanayi Ticaret Limited Şirketi



Aydınlı-Birlik OSB Mah. 5. Sokak No:7 P.K.34953 Tuzla / İstanbul / Turkey  
Tel.: +90 (216) 378 64 21 Fax: +90 (216) 378 64 22  
Web: [www.yildizpompa.com.tr](http://www.yildizpompa.com.tr) E-mail: [yildiz@yildizpompa.com.tr](mailto:yildiz@yildizpompa.com.tr)