



**Engineered Systems**  
Division



# The Purewater Serie



## THE COMPANY

**Asco Pompe Srl**, born in 1956 as an Italian company distributor of volumetric pumps, manufacturer of fluid handling systems, dosing systems and waste water treatment products. Asco Pompe portfolio is able to meet all demands coming from most of the sectors such as but not limited to *Oil & Gas*, Energy, ceramic, pharmaceutical and food, chemicals, resins and paints, water treatment and industry in general.

**The ASCO POMPE business philosophy has always been based on customer satisfaction;** We offer a wide range of activities including: after-sales service, revamping, engineering, calculation and customization of pump solution.

## ASCO POMPE DIVISIONS

To offer the highest-quality service to our clients Asco Pompe is organized in different divisions with skilled personnel:

**Pumps & Fluid Handling Division:** is the division dedicated to volumetric, positive displacement and centrifugal pumps and related accessories.

We distribute and manufacture the most recognized international pumps' brand. Furthermore, our internal own brand **Valisi** includes a wide range of centrifugal, hose and AOD pumps of our own production

**Engineered Systems Division:** Engineer Procure and Manufacture Packages.

Our own internal Engineering Office is able to project any kind of Fluid Handling Solutions including, but not limited to: Chemical Injection Packages, Well Head Control Panels, Polyelectrolyte dosing systems which are entirely manufactured in our warehouse.

**Control Division:** provides process instruments for the measurement of flow, pressure, level and temperature and manufacturing a complete range of oscillating piston volumetric flow meters.

**Service Division:** provide after sales services for any kind of pumps including technical consultancy, repairs, scheduled maintenance and provide onsite maintenance and commissioning activities worldwide including Offshore applications.





## WORKSHOP

Dedicated area for repairs, welding places, cranes and tools are available for any workshop activity, repairing, production and assembly.



## TESTING FACILITIES

ASCO POMPE is equipped with a test facility for displacement pumps with flow up to 60 m<sup>3</sup>/h, dosing package and fluid handling systems are duly tested in all components (piping, tanks, pumps, instruments, local control panels).

## OUR CERTIFICATES

Asco Pompe Srl operates according to ISO 9001 quality criteria: 2015 certified by **DNV-GL** and all its production sites meet the safety requirements in accordance with **BS OHSAS 18001: 2007**. Our team has the **BOSIET** certification (*Basic Offshore Safety Induction and Emergency Training*).



The purewater serie

## ASCO PUREWATER

Offers a wide range of systems to prepare polyelectrolyte solutions from powder, emulsion or combination of both.

Tanks are made of SS304 or HDPE to offer the best level of resistance in the harsh environmental conditions and consequently the best level of water purification in waste water treatment plants.

Main features:

- Tank divided in 3 sectors with max capacity of 20000 l
- Max production rate of di 20.000 l/h with powder concentration from 0,1% to 0,7%
- Local fully automatic control panel "touchscreen" including PLC
- Hopper with max capacity of 250 l/h with optional device for powder vacuum suction
- Automatic anti condensation powder heating system
- N.2 low speed agitator always working to keep the solution "ready to use"
- Emulsion dosing pump (emulsion and combi version)

Upon request we also offer the "full customization" of our machines (drain lines, third mixer, dosing section, automation).

Version	Max Production rate (l/h)
Purewater 500	1.000
Purewater 750	1.500
Purewater 1.500	3.000
Purewater 3.000	6.000
Purewater 5.000	10.000
Purewater 10.000	20.000



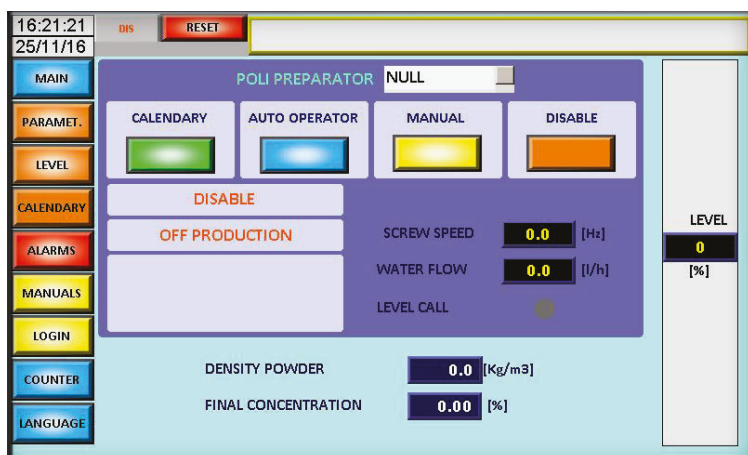


## NEW LOCAL CONTROL PANNEL

**ASCO purewater** includes an innovative local control panel PLC based with synoptical board and touchscreen display.

The working cycle is totally automatic and the operator can insert all the process parameters in a very simple and logical way without needing of further calculation as per traditional systems. All the alarms work independently from mechanical and process point of view and are easily programmable.

The software of our PLC is programmed to allow the automatic system control and give the feedback of all process parameters.





## DOSAPLAST

Compact pre-assembles dosing solutions for several applications in different configuration and suitable to dose any kind of liquid. Mostly used in harsh environments and suitable for aggressive and viscous fluids. They are composed in a base solution with plastic tank with dosing pump and including:

- Mixer
- Level switches
- Valves
- Instruments
- Local control panels

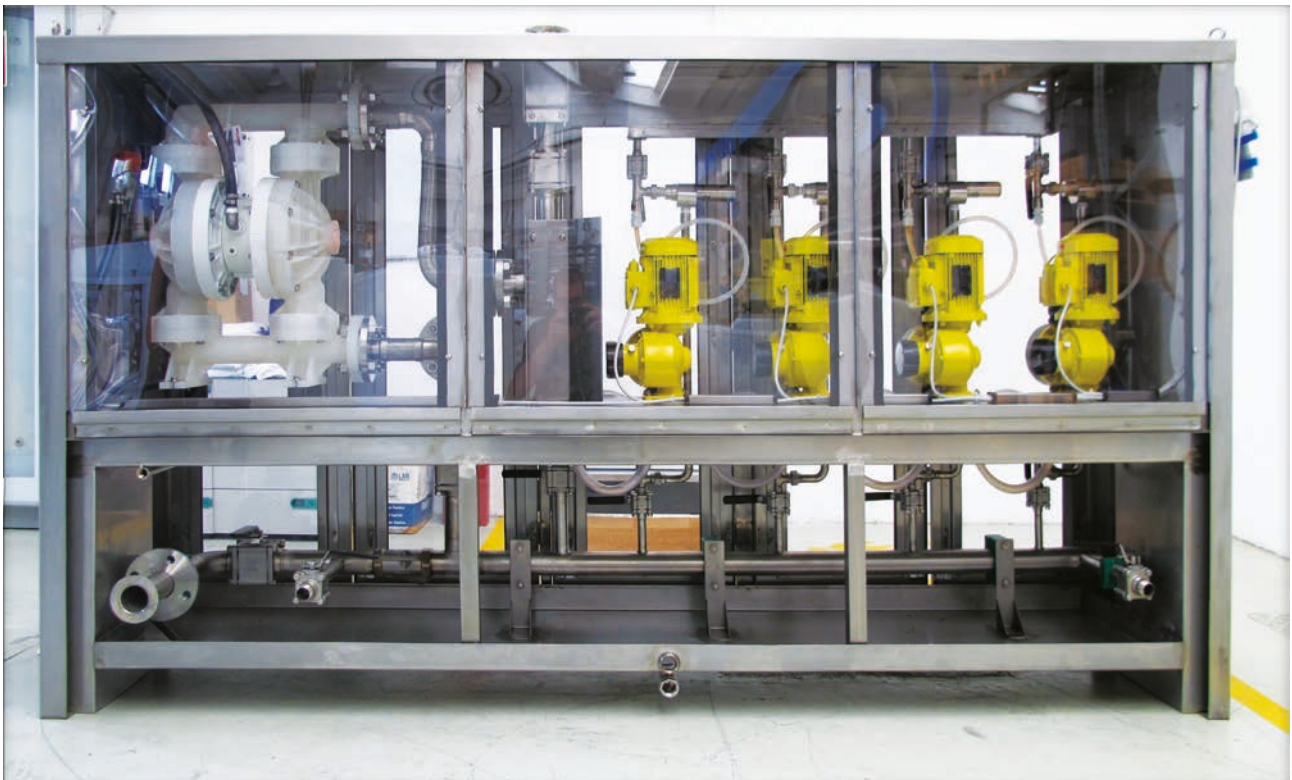
Such system reflect the need to have a very compact dosing solution used in various applications such as water treatment, chemical plants, painting factories, food industry ceramic industry.

## DOSING PANEL

**ASCO** standard dosing panels include: loading pumps, dosing pumps (mechanical or solenoid), instruments, valves, manifolds, backpressure and injection valves installed in stainless steel or plastic cabinet.

We provide an easy and compact solution which can be installed on plant floors or walls very near to the process plant.

**ATEX** version available.





## HYPOCHLORITE INJECTION UNITS

Hypochlorite injection units represent a dosing solution widely used in several industries. ASCO is able to follow any requirement and we offer as material of construction: PVC, PVDF, HDPE, CS + PTFE or Titanium.

When specifications from the end user are not applicable due to critical materials ASCO offers its Standard solution based on a very professional project at competitive price.





***Excellence in Fluid Handling***

**Asco Pompe S.r.l.**  
Via Silvio Pellico, 6/8  
20089 Rozzano (MI) - ITALY  
Phone: +39 02 89257.1  
Fax: +39 02 89257.201  
@: [asco@ascopompe.com](mailto:asco@ascopompe.com)  
[www.ascosystem.com](http://www.ascosystem.com)

