

# VALISI Pumps VPH Series

Hose pumps with shoe technology



## VALISI HEAVY DUTY HOSE PUMPS



- No mechanical seals or valves
- Easy installation and maintenance
- Excellent performance with abrasive and corrosive liquids
- Able to pump large solids and gaseous liquids
- Robust construction for pressure up to 15 bar
- Extremely high suction capability
- Unlimited dry running
- Low shear and reversible pumping
- Full dosing control
- Food and chemical versions
- High quality hose and wide range of materials available
- CE and ATEX certified
- FDA hoses on request.

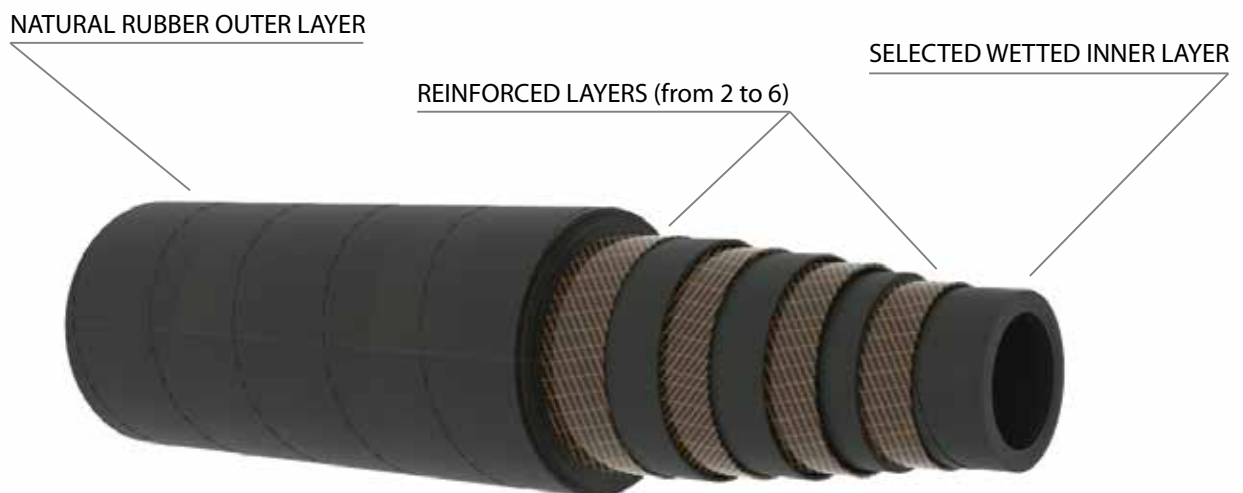


## THE HOSE: THE CORE OF THE PUMP

The hose is the core of a hose pump and the most important component to guarantee high performance, long durability, and best efficiency.






Our highly engineered hoses (strict design parameters guaranteeing low stress, perfect compression, and long life) ensure consistent flow rates virtually unaffected by variation of working conditions.

It is made by several rubber layers reinforced by nylon cords. The inner layer is available in several rubber compounds while the external layer is made by natural rubber.



## HOSE MATERIALS AVAILABLE



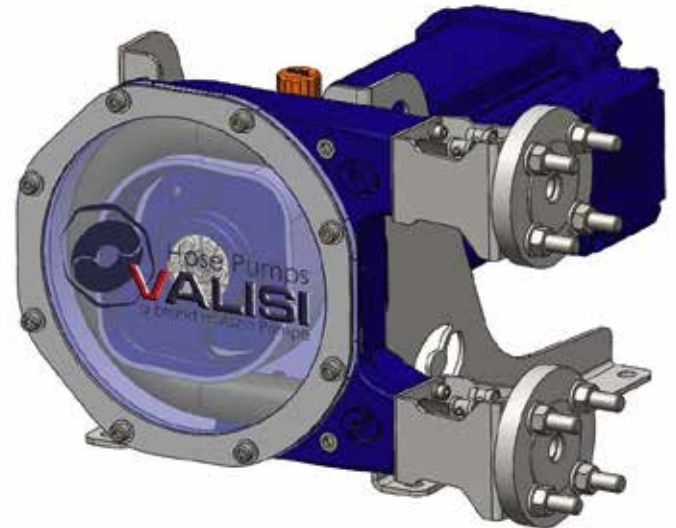
-  NR (black hose, white stripe)
-  NR-K long life (black hose, white stripe)
-  NBR - Nitrile (black hose, yellow stripe)
-  NBR-K long life (black hose, yellow stripe)
-  EPDM (black hose, red stripe)
-  Hypalon - CSM (black hose, blue stripe)
-  FKM - Viton® (black hose, purple stripe)
-  NR FDA - Natural rubber FDA (black hose with internal white layer, double white stripe )
-  NBR FDA - Nitrile FDA (black hose, white/yellow stripe)



**HOSE PUMPS**  
**MODELS VPH 5, 10, 15, 20, 25**  
*Shoe technology*

The VALISI peristaltic pump series VPH is ideal in high pressure and low volume transferring applications, in sampling and emptying processes, in food applications and in water treatment.

It's reversible and sealless, easy to use and can be equipped with the leak sensor to detect hose breakage. It can be supplied with an integrated IP66 inverter to change the flow locally or controlled remotely. Hydraulic variator available on request. CE and ATEX certified, FDA hoses on request.


**Specifications**

Max. discharge pressure: 10 bar (145 psi)  
 15 bar (220 psi) for VPH25-3 only

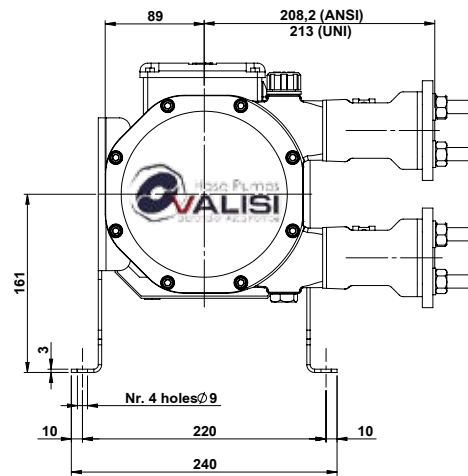
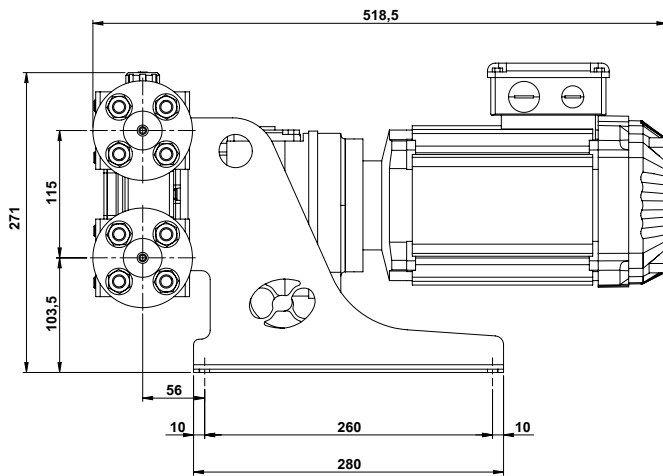
Max. liquid temp.: 80°C (176 °F)

Achievable suction: up to 0,9 bar (13 psi)

Suitable for: continuous operation

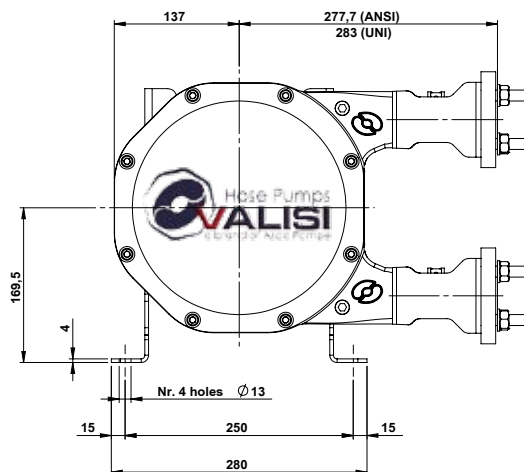
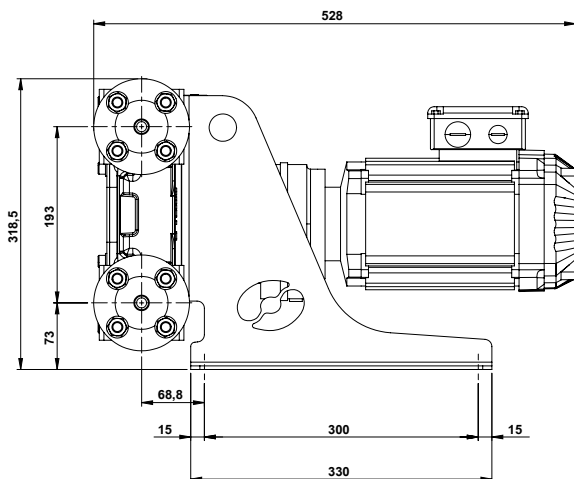
PUMP MODEL	HOSE DIA. (INTERNAL)	CONNECTIONS	MOTOR POWER	GEAR RATIO	FLOW RATES - 4 POLES	
					50 Hz	60 Hz
VPH05	5 mm	Flanged DN 15/ ANSI ½"	0,25 kW (0,33HP)	1:135	3,4 L/h @10 RPM	4,1 L/h @ 12 RPM
				1:45	10,2 L/h @31 RPM	12,2 L/h @ 37 RPM
VPH10	10 mm	Flanged DN 15/ ANSI ½"	0,55 kW (0,75HP)	1:135	10 L/h @10 RPM	12 L/h @12 RPM
				1:69	20 L/h @20 RPM	24 L/h @24 RPM
				1:48	29 L/h @29 RPM	35 L/h @35 RPM
VPH15	15 mm	Flanged DN 20/ ANSI ¾"	0,55 kW (0,75HP)	1:35	40 L/h @40 RPM	48 L/h @48 RPM
				1:135	36 L/h @10 RPM	44 L/h @12 RPM
				1:69	71 L/h @20 RPM	85 L/h @24 RPM
VPH20	20 mm	Flanged DN 25/ ANSI 1"	0,55 kW (0,75HP)	1:48	101 L/h @29 RPM	122 L/h @35 RPM
				1:35	140 L/h @40 RPM	168 L/h @48 RPM
				1:135	57 L/h @10 RPM	68 L/h @12 RPM
VPH25	25 mm	Flanged DN 25/ ANSI 1"	2,2 kW (3 HP)	1:69	110 L/h @20 RPM	132 L/h @24 RPM
				1:48	158 L/h @29 RPM	190 L/h @35 RPM
				1:35	218 L/h @40 RPM	262 L/h @48 RPM
				1:70	220 L/h @20 RPM	270 L/h @24 RPM
				1:46	340 L/h @30 RPM	410 L/h @36 RPM
				1:32	480 L/h @43 RPM	580 L/h @52 RPM
				1:28	560 L/h @50 RPM	670 L/h @60 RPM

VPH5, 10



VPH5,  
VPH10  
flanged  
DN15 PN40  
½" ANSI 150RF

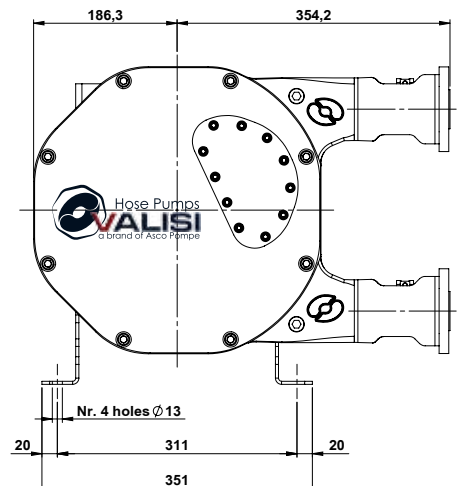
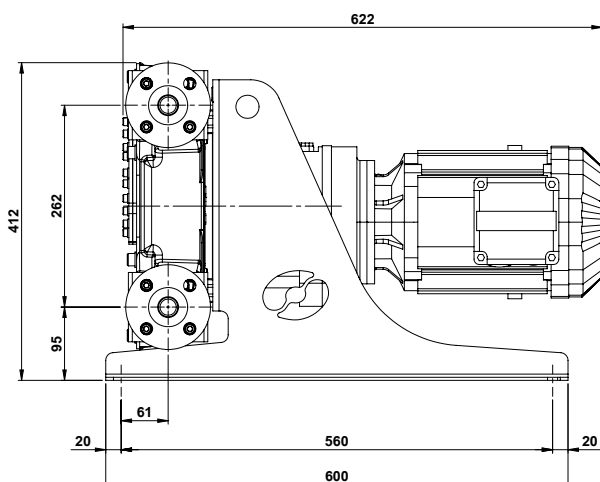
VPH15, 20



VPH15  
flanged  
DN20 PN40  
¾" ANSI 150RF

VPH20  
flanged  
DN25 PN40  
1" ANSI 150RF

VPH25



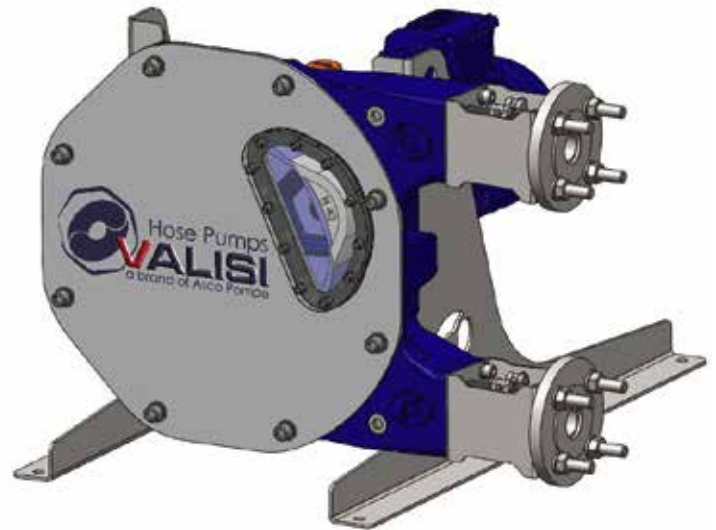
VPH25  
flanged  
DN25 PN40  
1" ANSI 150RF

DIN 11851, tri-clamp and hose barb connections available on request

**HOSE PUMPS**  
**MODELS VPH 32, 40, 40L**  
Shoe technology

The VALISI peristaltic pump series VPH is ideal in high pressure and low volume transferring applications, in sampling and emptying processes, in food applications and in water treatment.

It's reversible and sealless, easy to use and can be equipped with the leak sensor to detect hose breakage. It can be supplied with an integrated IP66 inverter to change the flow locally or controlled remotely. Hydraulic variator available on request. CE and ATEX certified, FDA hoses on request.

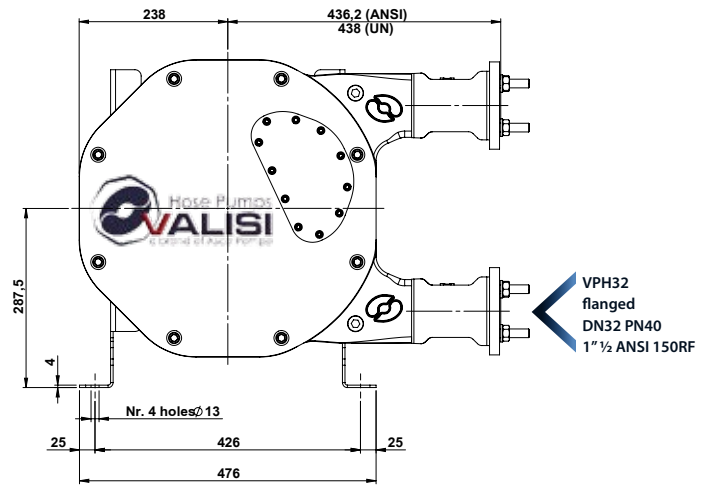
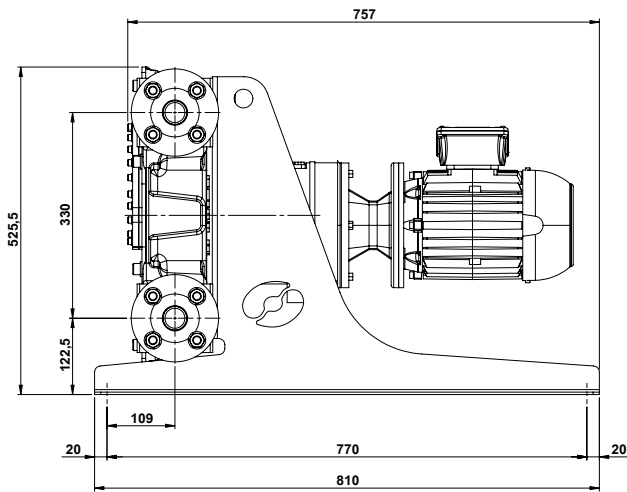


**Specifications**

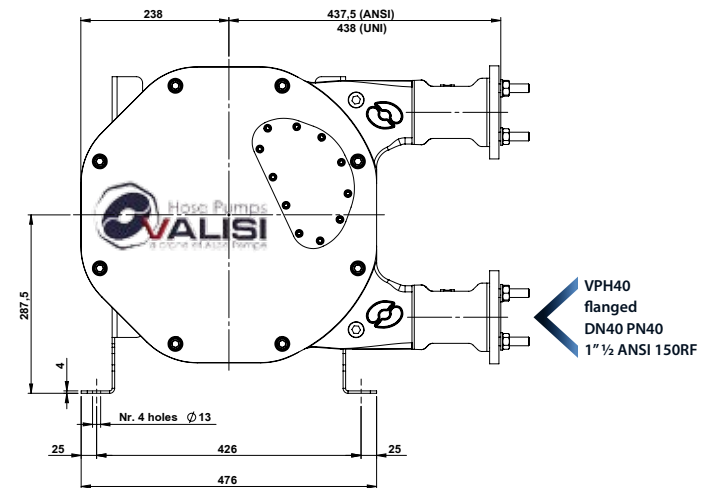
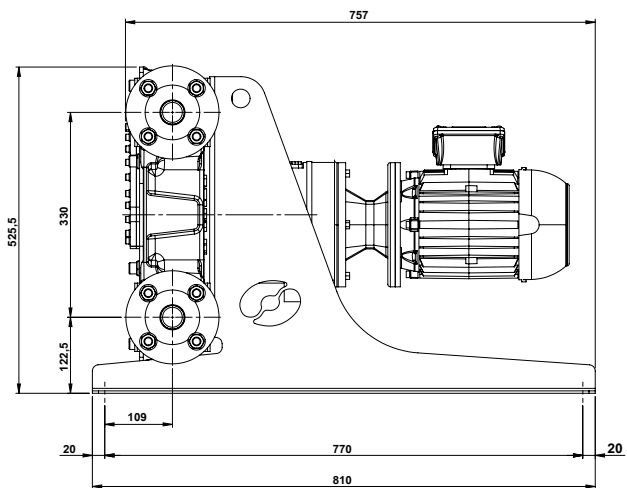
Max. discharge pressure: 15 bar (220 psi)  
Max. liquid temp.: 80°C (176 °F)  
Achievable suction: up to 0,9 bar (13 psi)  
Suitable for: continuous operation

PUMP MODEL	HOSE DIA. (INTERNAL)	CONNECTIONS	MOTOR POWER	GEAR RATIO	FLOW RATES - 4 POLES	
					50 Hz	60 Hz
VPH32	32 mm	Flanged DN 32/ ANSI 1" ½	2,2 kW (3 HP)	1:121	0,46 m <sup>3</sup> /h @12 RPM	0,55 m <sup>3</sup> /h @14 RPM
				1:66	0,81 m <sup>3</sup> /h @21 RPM	0,97 m <sup>3</sup> /h @26 RPM
				1:46	1,16 m <sup>3</sup> /h @31 RPM	1,40 m <sup>3</sup> /h @37 RPM
				1:33	1,59 m <sup>3</sup> /h @42 RPM	1,91 m <sup>3</sup> /h @50 RPM
VPH40	38 mm	Flanged DN 40/ ANSI 1" ½	2,2 kW (3 HP)	1:121	0,70 m <sup>3</sup> /h @12 RPM	0,84 m <sup>3</sup> /h @14 RPM
				1:66	1,25 m <sup>3</sup> /h @21 RPM	1,49 m <sup>3</sup> /h @26 RPM
				1:46	1,79 m <sup>3</sup> /h @31 RPM	2,15 m <sup>3</sup> /h @37 RPM
				1:33	2,45 m <sup>3</sup> /h @42 RPM	2,94 m <sup>3</sup> /h @50 RPM
VPH40L	40 mm	Flanged DN 40/ ANSI 1" ½	4 kW (5 HP)	1:77	1,52 m <sup>3</sup> /h @19 RPM	1,85 m <sup>3</sup> /h @23 RPM
				1:46	2,56 m <sup>3</sup> /h @32 RPM	3,12 m <sup>3</sup> /h @39 RPM
				1:34	3,36 m <sup>3</sup> /h @42 RPM	4,10 m <sup>3</sup> /h @51 RPM
				1:29	4,00 m <sup>3</sup> /h @50 RPM	4,88 m <sup>3</sup> /h @61 RPM

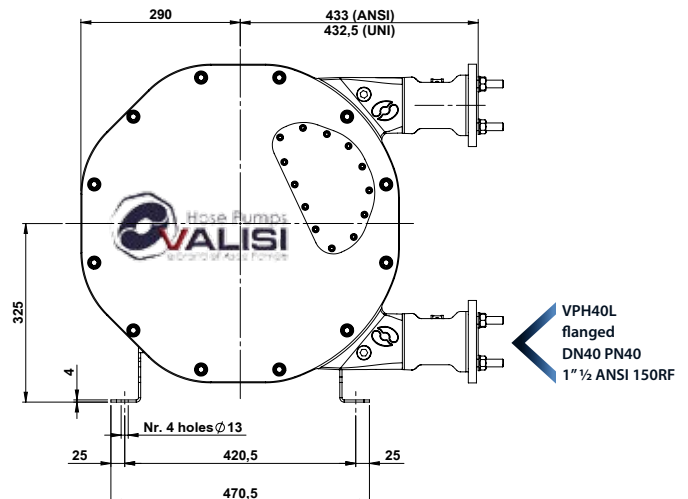
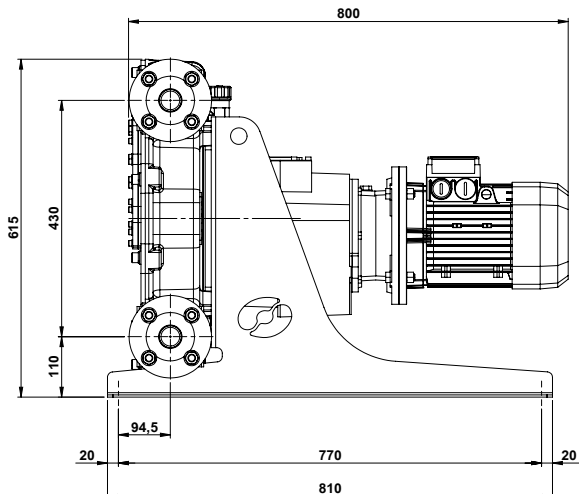
VPH32



VPH40



VPH40L



DIN 11851, tri-clamp and hose barb connections available on request



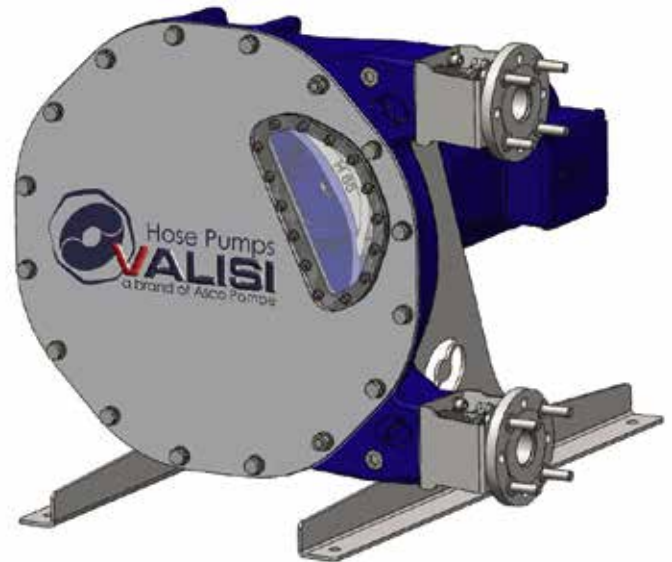
**HOSE PUMPS**  
**MODELS VPH 50, 65, 80S**  
Shoe technology

The VALISI peristaltic pump series VPH is ideal in high pressure and medium volume transferring applications, in sampling and emptying processes, in food applications and in water treatment.

Specifically designed for mining and heavy duty applications.

It's reversible and sealless, easy to use and can be equipped with the leak sensor to detect hose breakage. It can be supplied with an integrated IP66 inverter to change the flow locally or controlled remotely. Hydraulic variator available on request.

CE and ATEX certified, FDA hoses on request.



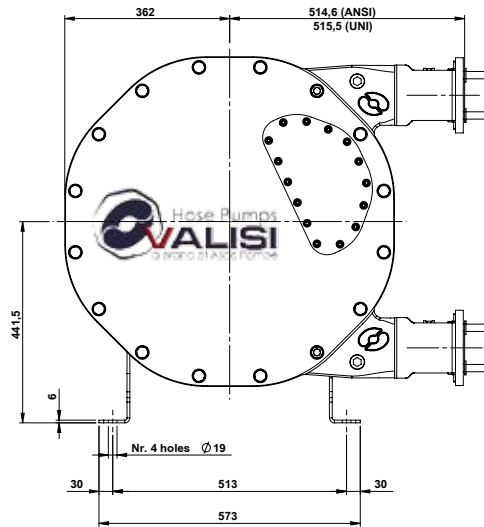
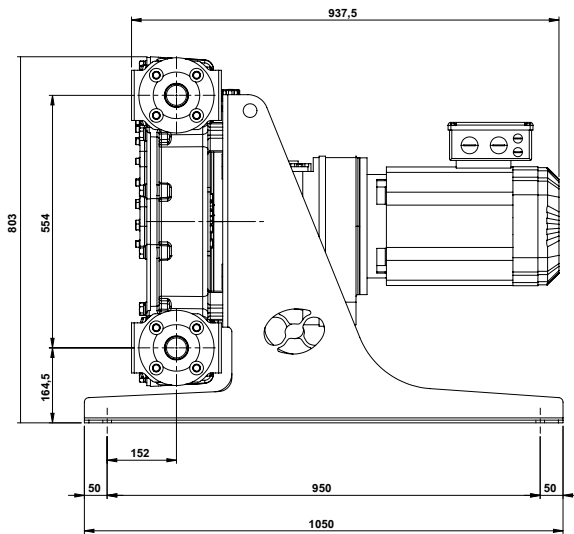
**Specifications**

- Max. discharge pressure: 15 bar (220 psi)
- Max. liquid temp.: 80°C (176 °F)
- Achievable suction: up to 0,9 bar (13 psi)
- Suitable for: continuous operation

PUMP MODEL	HOSE DIA. (INTERNAL)	CONNECTIONS	MOTOR POWER	GEAR RATIO	FLOW RATES - 4 POLES	
					50 Hz	60 Hz
VPH50	51 mm	Flanged DN 50/ ANSI 2"	7,5 kW (10 HP)	1:141	1,8 m <sup>3</sup> /h @10 RPM	2,2 m <sup>3</sup> /h @12 RPM
				1:72	3,4 m <sup>3</sup> /h @20 RPM	4,1 m <sup>3</sup> /h @23 RPM
				1:45	5,3 m <sup>3</sup> /h @30 RPM	6,5 m <sup>3</sup> /h @36 RPM
				1:36	7,0 m <sup>3</sup> /h @40 RPM	8,5 m <sup>3</sup> /h @48 RPM
VPH65	60 mm	Flanged DN 60/ ANSI 2" ½	7,5 kW (10 HP)	1:141	2,3 m <sup>3</sup> /h @10 RPM	2,8 m <sup>3</sup> /h @12 RPM
				1:72	4,6 m <sup>3</sup> /h @20 RPM	5,6 m <sup>3</sup> /h @23 RPM
				1:45	6,9 m <sup>3</sup> /h @30 RPM	8,4 m <sup>3</sup> /h @36 RPM
				1:36	9,2 m <sup>3</sup> /h @40 RPM	11,2 m <sup>3</sup> /h @48 RPM
VPH80S	80 mm	Flanged DN 80/ ANSI 3"	15 kW (20 HP)	1:152	5,5 m <sup>3</sup> /h @10 RPM	6,7 m <sup>3</sup> /h @12 RPM
				1:72	11,0 m <sup>3</sup> /h @20 RPM	13,4 m <sup>3</sup> /h @24 RPM
				1:60	16,5 m <sup>3</sup> /h @30 RPM	20,1 m <sup>3</sup> /h @37 RPM

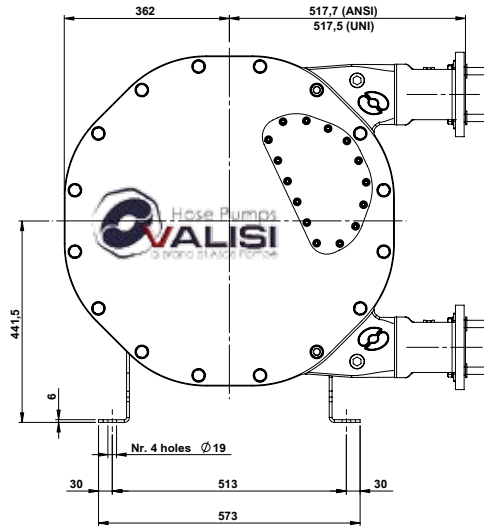
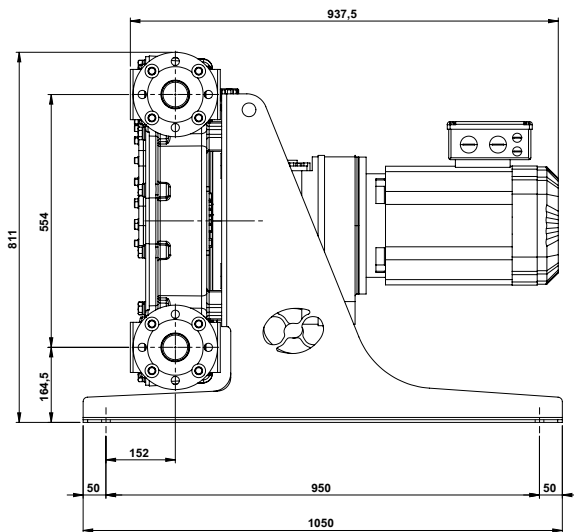


VPH50



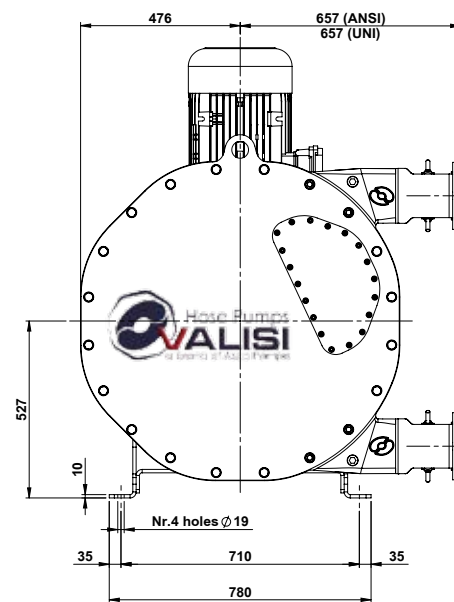
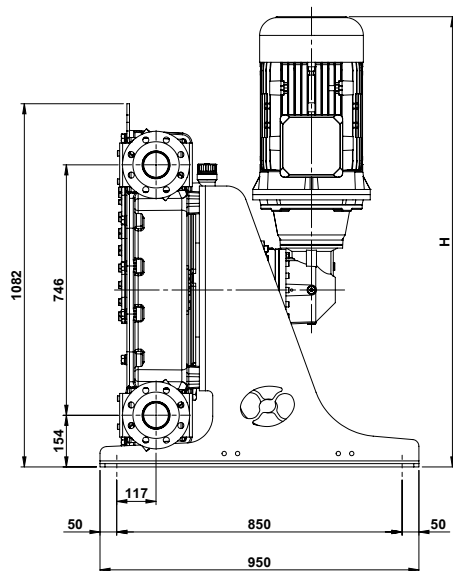
VPH50  
flanged  
DN50 PN40  
2" ANSI 150RF

VPH65



VPH65  
flanged  
DN65 PN40  
2 1/2" ANSI 150RF

VPH80S



VPH80S  
flanged  
DN80 PN40  
3" ANSI 150RF

DIN 11851, tri-clamp and hose barb connections available on request

**HOSE PUMPS**  
**MODELS VPH 80, 100, 125**  
Shoe technology

The VALISI peristaltic pump series VPH is ideal in high pressure and large volume transferring applications, in sampling and emptying processes, in food applications and in water treatment.

Specifically designed for mining and heavy duty applications.

It's reversible and sealless, easy to use and can be equipped with the leak sensor to detect hose breakage. It can be supplied with an integrated IP66 inverter to change the flow locally or controlled remotely. Hydraulic variator available on request.

CE and ATEX certified, FDA hoses on request.

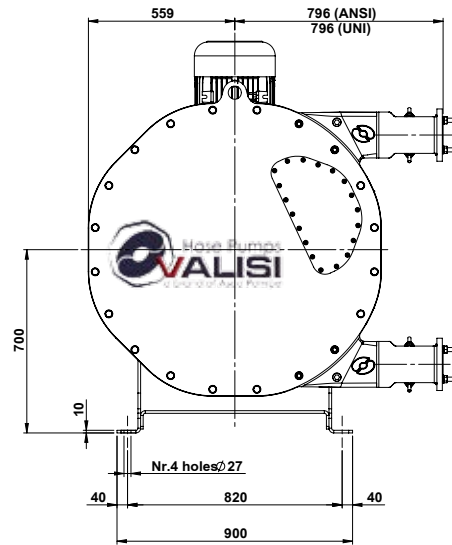
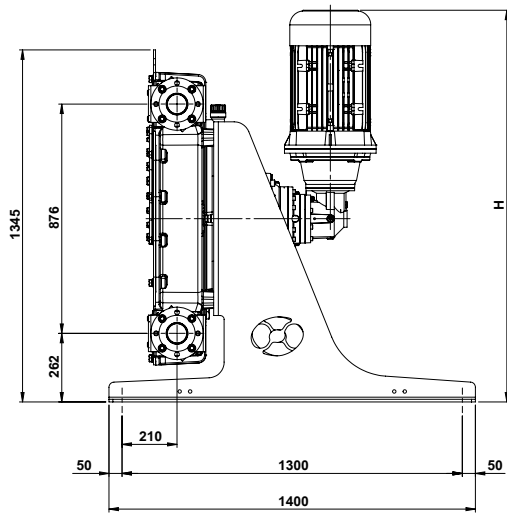


**Specifications**

Max. discharge pressure:	15 bar (220 psi)
Max. liquid temp.:	80°C (176 °F)
Achievable suction:	up to 0,9 bar (13 psi)
Suitable for:	continuous operation

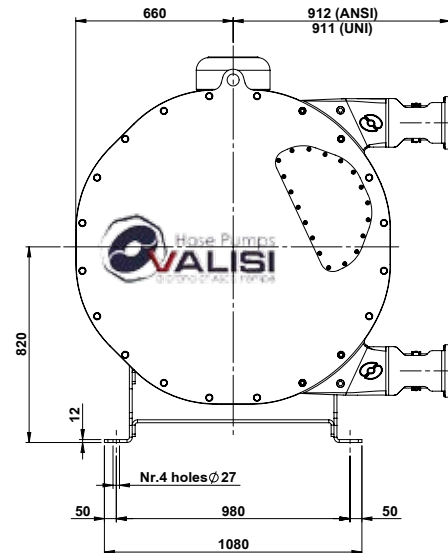
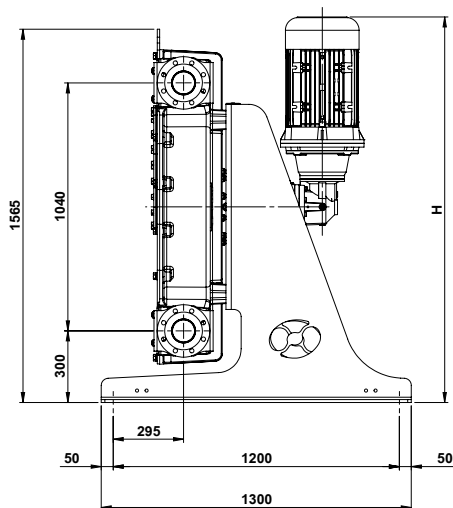
PUMP MODEL	HOSE DIA. (INTERNAL)	CONNECTIONS	MOTOR POWER	GEAR RATIO	FLOW RATES - 4 POLES	
					50 Hz	60 Hz
VPH80	80 mm	Flanged DN 80/ ANSI 3"	18,5 kW (25 HP)	1:152	7 m <sup>3</sup> /h @10 RPM	8,5 m <sup>3</sup> /h @12 RPM
				1:72	14 m <sup>3</sup> /h @20 RPM	17 m <sup>3</sup> /h @24 RPM
				1:60	21 m <sup>3</sup> /h @30 RPM	26 m <sup>3</sup> /h @37 RPM
VPH100	100 mm	Flanged DN 100/ ANSI 4"	18,5 kW (25 HP)	1:152	12 m <sup>3</sup> /h @10 RPM	15 m <sup>3</sup> /h @12 RPM
				1:72	24 m <sup>3</sup> /h @20 RPM	29 m <sup>3</sup> /h @24 RPM
				1:60	36 m <sup>3</sup> /h @30 RPM	44 m <sup>3</sup> /h @37 RPM
VPH125	125 mm	Flanged DN 125/ ANSI 5"	37 kW (50 HP)	1:292	11 m <sup>3</sup> /h @5 RPM	13 m <sup>3</sup> /h @6 RPM
				1:146	22 m <sup>3</sup> /h @10 RPM	27 m <sup>3</sup> /h @12 RPM
				1:72	44 m <sup>3</sup> /h @20 RPM	54 m <sup>3</sup> /h @24 RPM

**VPH80**



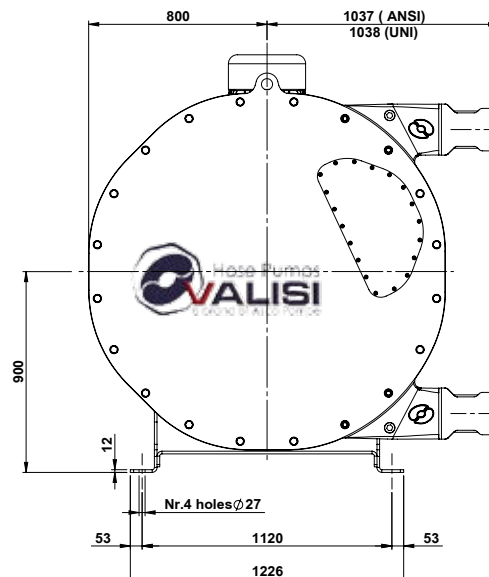
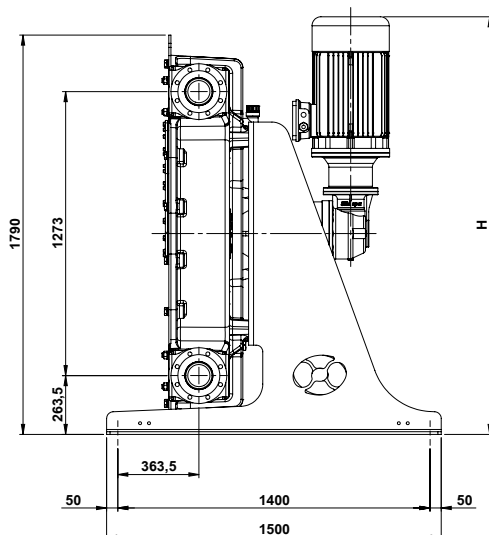
VPH80  
flanged  
DN80 PN40  
3" ANSI 150RF

**VPH100**



VPH100  
flanged  
DN100 PN40  
4" ANSI 150RF

**VPH125**



VPH125  
flanged  
DN125 PN40  
5" ANSI 150RF

DIN 11851, tri-clamp and hose barb connections available on request

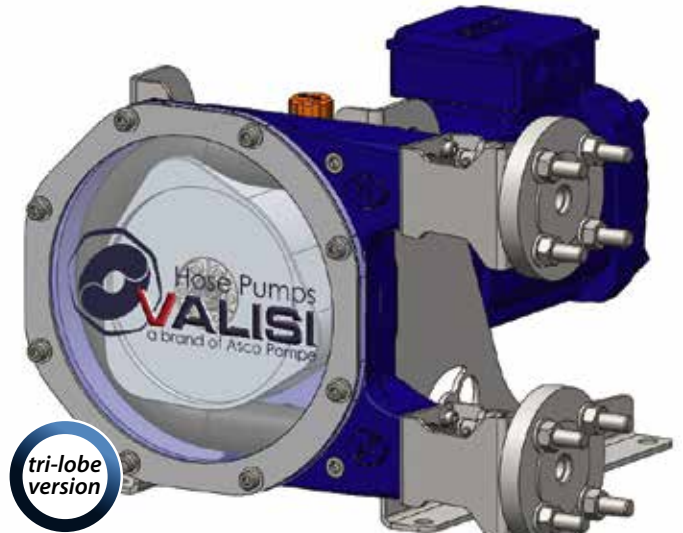


**HOSE PUMPS for DOSING APPLICATION**  
**MODELS VPH 5-3, 10-3, 15-3, 20-3, 25-3**  
Shoe technology

The VALISI peristaltic pump series VPH tri-lobe is ideal in high pressure and low volume dosing applications, in sampling and emptying processes, in food applications and in water treatment.

It's reversible and sealless, easy to use and can be equipped with the leak sensor to detect hose breakage. It can be supplied with an integrated IP66 inverter to change the flow locally or controlled remotely. Hydraulic variator available on request. The three lobes effect grants a smooth and steady flow on the discharge side.

CE and ATEX certified, FDA hoses on request.

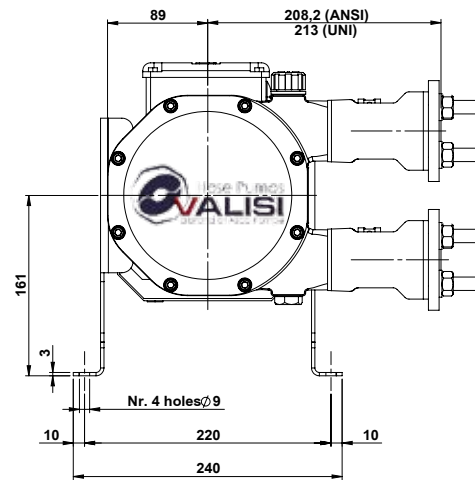
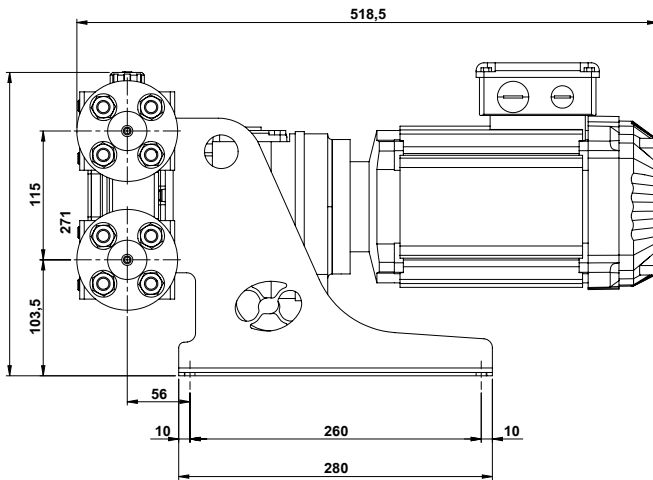


**Specifications**

- Max. discharge pressure: 10 bar (145 psi)  
15 bar (220 psi) for VPH25-3 only
- Max. liquid temp.: 80°C (176 °F)
- Achievable suction: up to 0,9 bar (13 psi)
- Suitable for: continuous operation

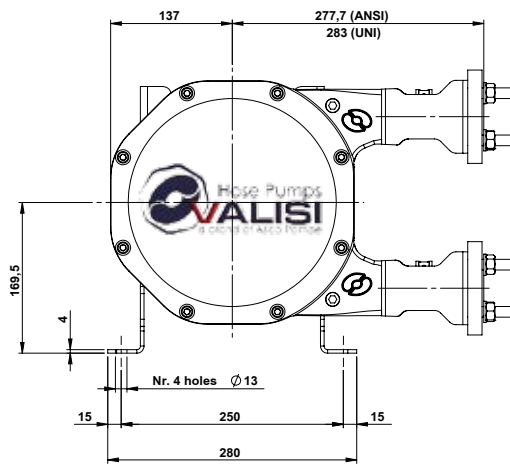
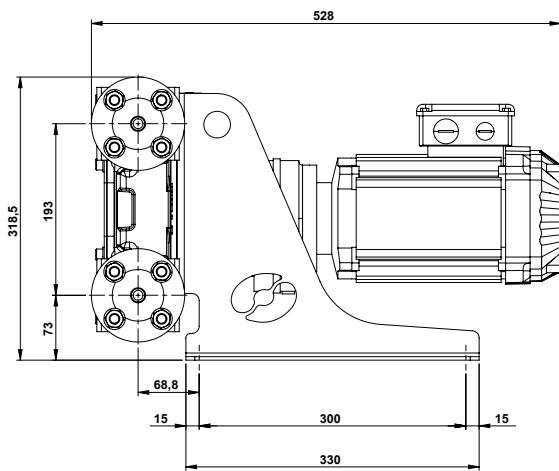
PUMP MODEL	HOSE DIA. (INTERNAL)	CONNECTIONS	MOTOR POWER	GEAR RATIO	FLOW RATES - 4 POLES	
					50 Hz	60 Hz
VPH05 trilobes	5 mm	Flanged DN 15/ ANSI ½"	0,25 kW (0,33HP)	1:135	3,4 L/h @10 RPM	4,1 L/h @ 12 RPM
				1:45	10,2 L/h @31 RPM	12,2 L/h @ 37 RPM
VPH10 trilobes	10 mm	Flanged DN 15/ ANSI ½"	0,55 kW (0,75HP)	1:135	10 L/h @10 RPM	12 L/h @12 RPM
				1:69	20 L/h @20 RPM	24 L/h @24 RPM
				1:48	29 L/h @29 RPM	35 L/h @35 RPM
VPH15 trilobes	15 mm	Flanged DN 20/ ANSI ¾"	0,55 kW (0,75HP)	1:35	40 L/h @40 RPM	48 L/h @48 RPM
				1:135	36 L/h @10 RPM	44 L/h @12 RPM
				1:69	71 L/h @20 RPM	85 L/h @24 RPM
VPH20 trilobes	20 mm	Flanged DN 25/ ANSI 1"	0,55 kW (0,75HP)	1:48	101 L/h @29 RPM	122 L/h @35 RPM
				1:35	140 L/h @40 RPM	168 L/h @48 RPM
				1:135	57 L/h @10 RPM	68 L/h @12 RPM
VPH25 trilobes	25 mm	Flanged DN 25/ ANSI 1"	2,2 kW (3 HP)	1:69	110 L/h @20 RPM	132 L/h @24 RPM
				1:48	158 L/h @29 RPM	190 L/h @35 RPM
				1:35	218 L/h @40 RPM	262 L/h @48 RPM
				1:70	220 L/h @20 RPM	270 L/h @24 RPM
				1:46	340 L/h @30 RPM	410 L/h @36 RPM
				1:32	480 L/h @43 RPM	580 L/h @52 RPM
				1:28	560 L/h @50 RPM	670 L/h @60 RPM

VPH5-3, 10-3



VPH5-3,  
VPH10-3  
flanged  
DN15 PN40  
½" ANSI 150RF

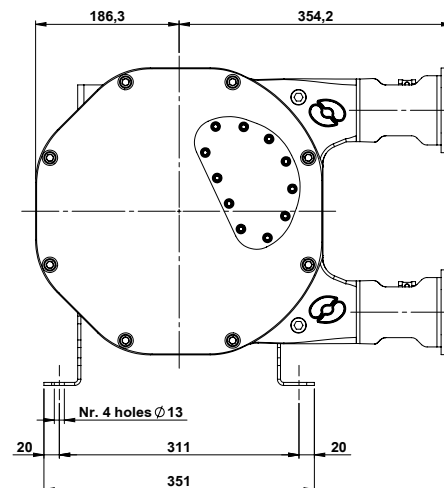
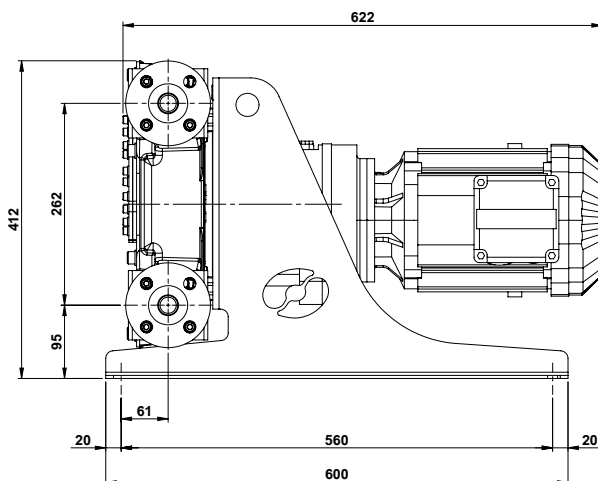
VPH15-3, 20-3



VPH15-3  
flanged  
DN20 PN40  
¾" ANSI 150RF

VPH20-3  
flanged  
DN25 PN40  
1" ANSI 150RF

VPH25-3



VPH25-3  
flanged  
DN25 PN40  
1" ANSI 150RF

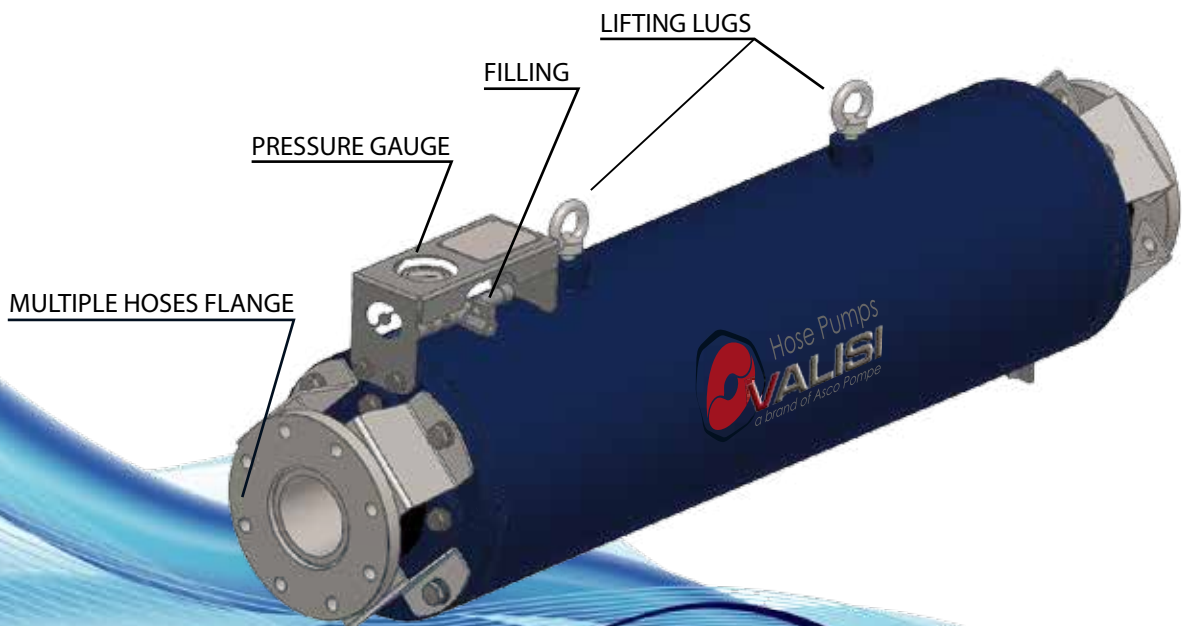
DIN 11851, tri-clamp and hose barb connections available on request

**PULSATION DAMPENERS**  
In-line technology

**Valisi VPHP In-Line Pulsation Dampeners** reduce vibrations, pulsations and hydraulic shocks in the system, whilst increasing the life of the hose and preventing damage in pumps, valves and process instrumentation. A reinforced rubber hose is mounted inside a metallic, cylindrical pressure vessel; compressed air or nitrogen fills the space between them, allowing the hose to adjust its volume according to the discharge pressure, reducing pulsation. **VPHP Pulsation Dampeners** decrease by 90% Pressure fluctuations reducing pump and system Vibrations. **VPHP Pulsation Dampeners** are available in four sizes and are suitable for models VPH25 to VPH125 (shoe pumps) and N5N to N7N (roller pumps). Pulsation dampeners comply with European PED Directive 2014/68/EU. **NBR-FDA hoses** can be used for food applications.

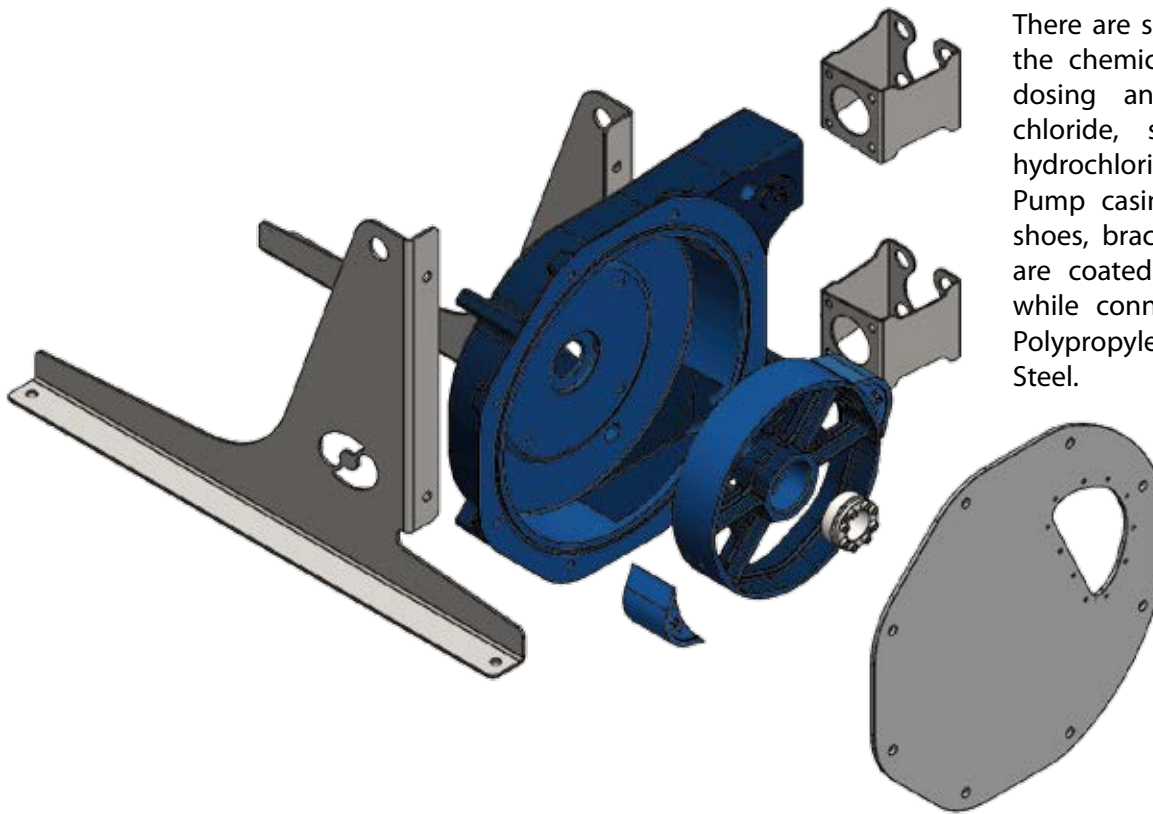


VPHP MODEL	STANDARD CONNECTIONS	FOR PUMP
VPHP40	DIN PN40 or ANSI 150# multi-diameter flange	VPH25-32-40-40L and N5N - N6N
VPHP65	DIN PN40 or ANSI 150# multi-diameter flange	VPH50-65 and N7N
VPHP100	DIN PN40 or ANSI 150# multi-diameter flange	VPH80S-80-100
VPHP125	DIN DN125/PN40 or ANSI 5"/150# flange	VPH125
<i>Optional: TRI-CLAMP or DIN11851 connections</i>		





**CHEMICAL VERSION**  
*for corrosive liquids*



The pumps are fully protected to against the attack of highly corrosive acids and difficult chemicals.

There are several applications for the chemical version pump like dosing and transferring ferric chloride, sodium hypochlorite, hydrochloric and sulphuric acid.

Pump casing, front cover, rotor, shoes, brackets, frames and hub are coated by Halar® or ECTFE while connections are made of Polypropylene, PTFE or Stainless Steel.

**LEAK DETECTORS**



To detect hose failure a pressure sensor or a capacitive sensor can be installed.

In case of hose failure, sensor triggers, when connected to a motor controller, pump shutdown. Both sensors are compliant to EN norms and suitable for safe and hazardous area.



Excellence In Fluid Handling



**Asco Pompe S.r.l.**

Via Silvio Pellico, 6/8

20089 Rozzano (MI) - ITALY

Phone: +39 02 89257.1

Fax: +39 02 89257.201

@: asco@ascopompe.com

hosepumps@valisipumps.com - info@valisipumps.com

www.ascopompe.com - www.valisipumps.com



REV.0 - 052023105