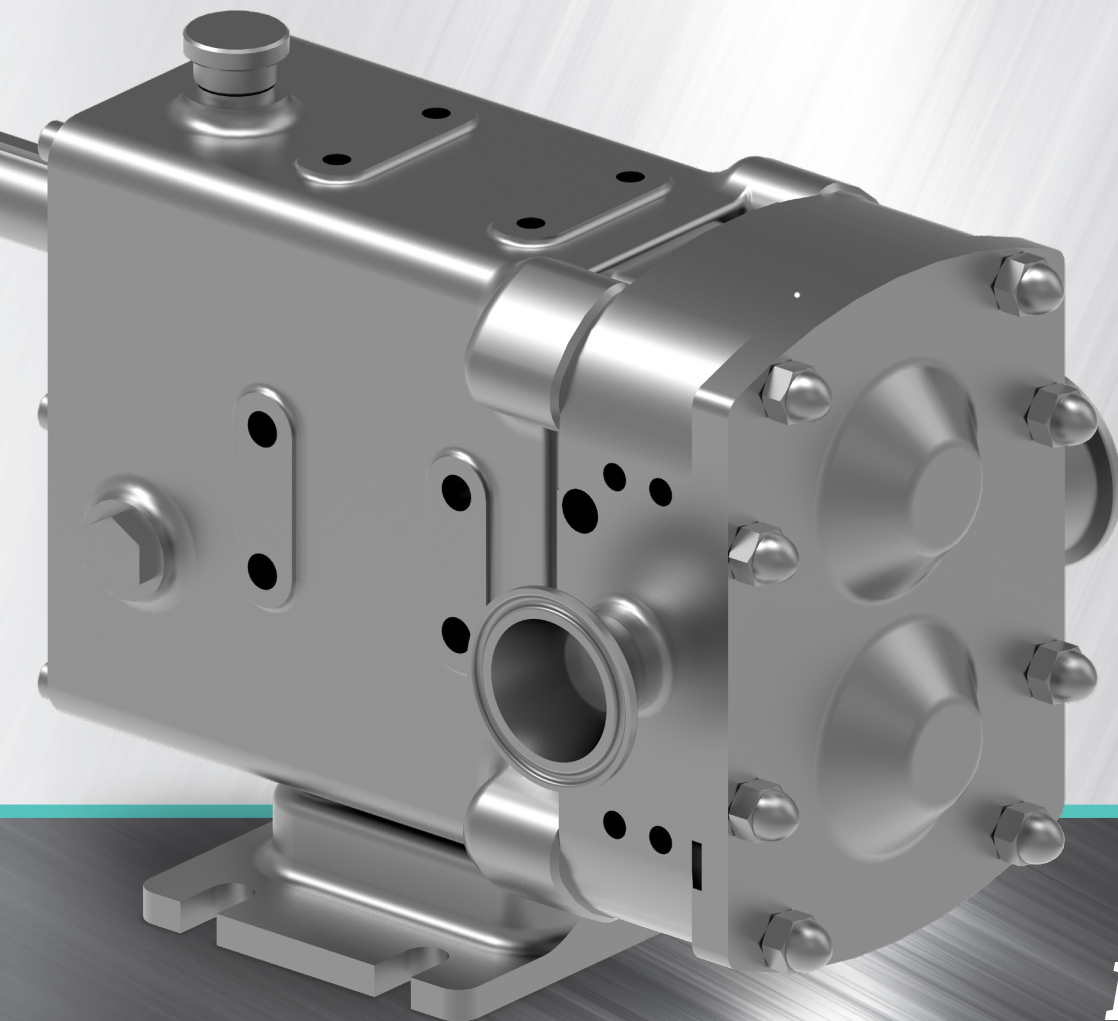


VIKING PUMP[®]

HYGIENIC



***PRODUCT
BROCHURE***

CONTENTS

Testing & Certifications	3
Our Advantage.....	3
Circumferential Piston	4
Revolution® Series	5
TRA®20 Series.....	6
TRA®10 Series.....	7
Rotary Lobe	8
SteriLobe® Series	9
RTP® Series.....	10
Classic+ Series™ / MultiPump® Series	11
Product Quick View	12
How it Works	13
Parts & Kits.....	14
Why Remanufacture?.....	14
Rebuild vs. Replace.....	14
Pump & Drive Units	15
Vertical Integration.....	16
Sales Tools	16



VIKING PUMP HYGIENIC | Eastbourne, United Kingdom

YOUR COMPLETE HYGIENIC SOLUTIONS PROVIDER

Around the world, Viking Pump® provides solutions for challenges in fluid handling. You can count on the reliability of Viking Pump's hygienic positive displacement (PD) pumps. Matching the right pump with your fluid processing needs is easy with innovative, robust designs, cleanability & an extensive product offering.

As a key partner for modern high-tech process industries of today, Viking Pump delivers solutions across a wide range of applications. From gentle action on shear sensitive liquids, or slurries with soft solids, to demanding abrasive media, Viking Pump pumps get the job done.

- Global presence with localized service
- Broadest PD pump offering in the industry
- Complete partner for your hygienic process



VIKING PUMP HEADQUARTERS | Cedar Falls, IA U.S.A.

TESTING & CERTIFICATIONS

Viking Pump® provides pump performance testing & certifications for your application needs.

We offer these standard options as well as fully customized testing for your most demanding requirements.

- ✓ Pump Performance
- ✓ General Compliance
- ✓ Media Contact Metallic Components
- ✓ Seal Faces
- ✓ Media Contact Elastomers
- ✓ Surface Finish
- ✓ Pump Assembly
- ✓ Certified Documents
- ✓ ATEX & CE



VIKING PUMP®

TESTING & CERTIFICATIONS

Viking Pump provides pump performance testing & certifications for your application needs. We offer these standard options as well as fully customized testing for your most demanding requirements.

- ✓ Pump Performance
- ✓ General Compliance

- ✓ Media Contact Metallic Components
- ✓ Seal Faces

- ✓ Media Contact Elastomers
- ✓ Surface Finish

- ✓ Pump Assembly
- ✓ Certified Documents

- ✓ ATEX & CE

PUMP TESTING <i>(Additional Testing Available Upon Request)</i>	
PUMP PERFORMANCE	
PUMP TEST REPORT 3.1	Report that records actual pump performance figures to a standard test procedure and in accordance with the requirements of BS EN ISO9001:2000 Clause 7.3.5, verification of processes for production and service will be conducted on water.
PUMP PERFORMANCE CURVE 3.1	Viking Pump Hygienic generated pump performance curve produced from actual referenced pump test results, as above.
HYDROSTATIC PRESSURE TEST 3.1	Viking Pump Hygienic generated hydrostatic test certificate that certifies that the pump head has been hydrostatically tested using water at 1.5 times pump pressure rating for a period of ten minutes.
INSP CERT NOISE 3.1 STD	Viking Pump Hygienic generated inspection certificate that certifies for the pump identified the ambient noise at rest and recorded noise in dB during the pump test at a specified RPM and pressure (BAR).
CERTIFICATIONS <i>(Additional Certifications Available Upon Request)</i>	
GENERAL COMPLIANCE - Pumps, Spares, Repairs	
DECLN of COMPLIANCE 2.1	Viking Pump Hygienic generated declaration of compliance that states Viking Pump Hygienic certifies the supply, as identified and referred to, are in compliance, unless otherwise stated, with the drawings and specifications as ordered.
MEDIA CONTACT METALLIC COMPONENTS	
INSP CERT MEDIA METALLICS 3.1	Viking Pump Hygienic generated 3.1 material traceability cross reference document that lists the media contact metallic components and associated references, and is supported by vendor issued EN 10204 3.1 certification.
INSP CERT FERRITE 3.1	Viking Pump Hygienic generated 3.1 inspection certificate that records the ferrite content at the surface of the media contact metallic components.
MEDIA CONTACT ELASTOMERS	
DECLN of COMP FDA/EPDM 2.1	A declaration of compliance issued by the vendor that confirms compliance of the supply with the specifications for the components as referenced.
DECLN of COMP FDA/PM 2.1	A declaration of compliance issued by the vendor that confirms compliance of the supply with the specifications for the components as referenced.
DECLN of COMP USP CLASS VI 3.1	Viking Pump Hygienic generated 3.1 traceability cross reference document that lists the media contact elastomer components references, and is supported by vendor issued certification. This certification will be supplied with all orders for USP Class VI elastomers.
SEAL FACES	
DECLN of COMP FACE FDA 2.1	A declaration of compliance issued by the vendor that confirms compliance of the supply with the specifications for the components as referenced.

Check out our testing & certifications flyer:



OUR ADVANTAGE

CLEANABILITY

- █ Clean Out of Place (COP), Clean In Place (CIP) & Sterilize-In-Place (SIP) options available
- █ Innovative designs compatible with the most stringent hygienic requirements

PERFORMANCE

- █ Leading flow performance & efficiency in low & high viscosity applications
- █ Robust designs for long-life durability

EASE OF MAINTENANCE

- █ Smooth running planned downtime procedures get production lines up & running quickly
- █ Features include front-loading seals, up front shimming, cartridge shaft assemblies & many more

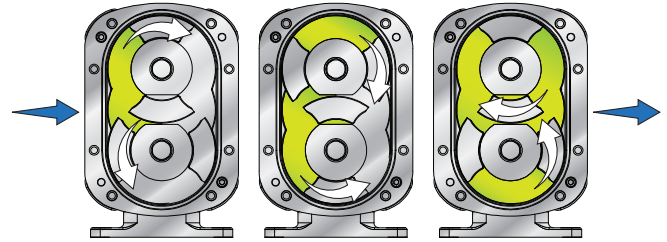
TOTAL COST OF OWNERSHIP

- █ Ease of Maintenance + Cleanability + Performance = Reduced Total Cost of Ownership
- █ We continuously seek to save you time & optimize your facility resources

CIRCUMFERENTIAL PISTON

WHY? Gentle handling of high value shear sensitive liquids across hygienic and industrial applications.

- Wide range of displacements with high pressure capabilities
- Excellent at solids handling
- Low shear characteristics across a wide range of product viscosities



INCLUDED PRODUCTS

- Revolution® Series
- TRA®10 Series
- TRA®20 Series

ADVANTAGES

Shaft Sealing Options | Include single & double mechanical seals, single & double O-ring seals

Porting Options | Multiple porting options cover hygienic and industrial threaded, clamp and flange arrangements

Low Shear Pump Design | Gentle handling of delicate and shear sensitive products

Solids Handling | Will handle a wide range of products including suspended solids

Efficiency | High volumetric efficiency on low viscosity products

Hygienic Designs | Used in a wide range of hygienic industries where cleanliness is important

CERTIFICATIONS



MATERIALS OF CONSTRUCTION & CONFIGURATION OPTIONS

PRODUCT WETTED

Rotorcase, Rotor Retainers, Front Cover:
316 / 316L stainless steel

Rotors:
Alloy 808 & 316 / 316L stainless steel

GEARBOX (GEARBOX, MOUNTING FEET & BACK PLATES)

Stainless Steel & cast iron, dependent on pump series & size

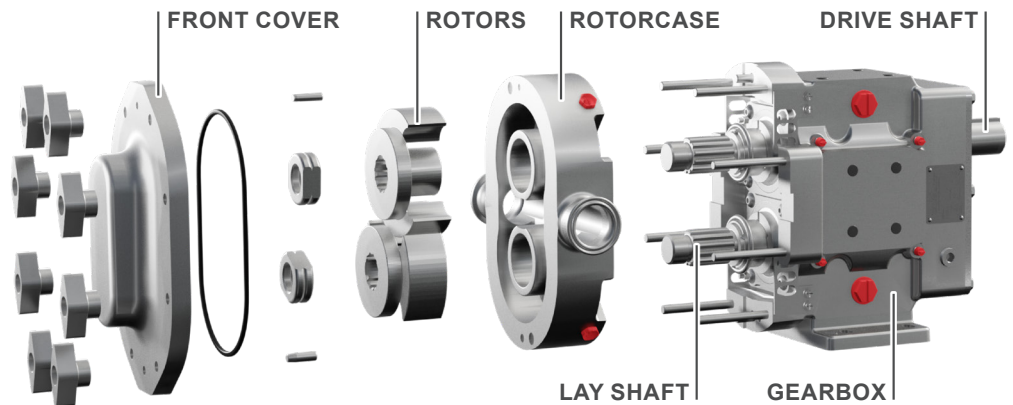
SHAFT SEALS

Single & double mechanical seals, single & double O-ring seals

TYPICAL APPLICATIONS

Common circumferential piston pump applications include, but are not limited to:

- Food products: processed meats, vegetables, sauces & condiments
- Personal care products: shampoo, soaps, deodorants, cosmetics
- Confectionary: chocolate, fondants
- Pet foods
- Beverages: alcoholic, soft
- Pulp & paper
- Dairy products: milk, cheese, yogurts
- Chemicals: lubricants, paints & pigments, polymers



4



CAPACITY
to 450 GPM
(102 m³/h)



PRESSURE
to 500 PSI
(34 BAR)



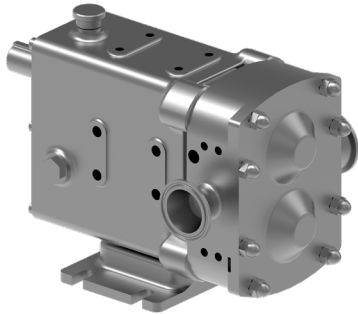
VISCOSITY
to 910,000 SSU
(200,000 cSt)



TEMPERATURE
to +300°F
(+150°C)

REVOLUTION® SERIES

CIRCUMFERENTIAL PISTON PRODUCT LINE



TYPICAL APPLICATIONS

- Pharmaceutical
- Personal Care
- Foods
- Beverage
- Dairy
- Confectionary
- Chemical

PORTING

- Hygienic port options:
Tri-clamp, DIN 11864, DIN 11851 Male, SMS Male
- Industrial port options:
ASA/ANSI 150 lb. or 300 lb. RF, DIN 2633, BSP Male, NPT Male
- Pumps may be fitted with front cover and rotorcase jackets when required

SEALING

- Single mechanical
- Double mechanical w/ flush
- Single O-ring running on a replaceable sleeve
- Double O-ring w/ flush running on a replaceable sleeve
- Complete range of material options

ROTORS

- Non-galling WFT 808® nickel alloy standard for CPP
- Optional clearances:
front face, hot, high temperature/ high viscosity (chocolate)

GEAR BOX

- Stainless Steel standard
- Oil lubrication standard, grease optional and rotorcase jackets when required

SURFACE FINISH

- Standard 32 RA internal finish
- Optional mechanical internal finishes: 24 RA or 16 RA

FEATURES & BENEFITS

CLEANABILITY

- Efficient CIP (Clean In Place) ability is standard for all Revolution pumps
- Self draining pump head from innovative cusps & cusp reliefs
- Innovative seal design with no dead zones & a dynamic leak path
- No dead zones on front cover

EASE OF MAINTENANCE

- Fast, front loading seal changes while pump is still in line
- Front access shimming for setting rotor clearance significantly reduces maintenance time
- Convenient preventive maintenance parts kits available

PERFORMANCE

- Improved volumetric efficiency in low & high viscosity applications
- Up to 15% better flow performance than competitors' CIP configuration
- Gentle handling of solids & shear sensitive products
- Long-life durability from heavy duty shafts, bearings & helical gears
- Less overhung load



CAPACITY
to 399 GPM
(91 m³/h)



PRESSURE
to 450 PSI
(31 BAR)



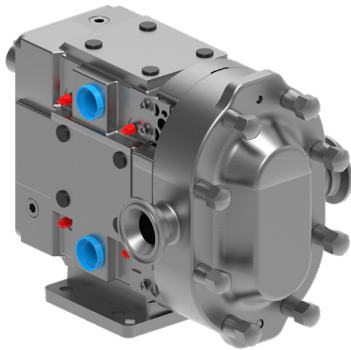
VISCOSITY
to 910,000 SSU
(200,000 cSt)



TEMPERATURE
to +300°F
(+150°C)

TRA[®] 20 SERIES

CIRCUMFERENTIAL PISTON PRODUCT LINE



TYPICAL APPLICATIONS

- Dairy
- Bakery
- Meat Processing
- Foods
- Confectionary
- Personal Care
- Pharmaceutical

PORTING

- Complete range of hygienic clamp, screw, flange & industrial screw connections
- Tri-clamp, flanged, DIN, IMDA, NPT, BSP, etc.

SEALING

- Single Mechanical
 - Standard Seal Faces: *SiC/SiC*
 - Standard O-rings & Cover Seals: *Buna/FDA*
 - Optional Faces: *Carbon, Ceramic or Chrome Oxide*
 - Optional O-rings & Cover Seals: *FKM, EPDM, Silicone*
- Double Mechanical with Flush
 - Standard Seal Faces: *SiC/SiC/C*
 - Standard O-rings & Cover Seals: *Buna/FDA*
 - Optional Faces: *Carbon, Ceramic or Chrome Oxide*
 - Optional O-rings & Cover Seals: *FKM, EPDM, Silicone*

CIP FEATURES AVAILABLE

- Flat body profile
- CIP holes in body and rotors
- Vertical port mounting
- Extra clearance rotors

ROTOR & CASING OPTIONS

- 316 stainless steel pump casing standard w/ interior finished to 3-A standards
- Non-galling WFT 808[®] nickel alloy rotors standard or 316 stainless steel rotors optional
- Optional clearances: front face, hot, high temperature/high viscosity (chocolate)
- Clean In Place (CIP) & flat body profile available
- Twin Wing Rotors Standard
 - Suitable for all liquids, provides minimum pulsation
- Single Wing Rotors Optional
 - Provides reduced shear on shear sensitive fluids or large solids such as fruit pieces, nut kernels, cheese curds or meats

GEAR BOX

- 304 stainless steel standard on 0060 - 1800 & 2200 models
- Powder coated cast iron standard on 2100 & 3200 models

FEATURES & BENEFITS

CLEANABILITY

- CIP (Clean In Place) design optional
- Free draining cover with flat body profile option
- Sealed shaft with o-ring on rotor & rotor nut

PERFORMANCE

- Efficient handling for low & high viscosity applications
- Exclusive, non-galling WFT 808[®] alloy rotors standard; permits running at tighter clearances
- High strength 17-4 PH single piece shaft standard
- Improved load carrying capabilities

EASE OF MAINTENANCE

- Drop-in-place with TRA[®]10 & comparable manufacturer models
- Interchangeable service parts with comparable manufacturer models
- Stainless steel bearing retainers standard, prevent rusting

6



CAPACITY
to 450 GPM
(102 m³/h)



PRESSURE
to 500 PSI
(34 BAR)



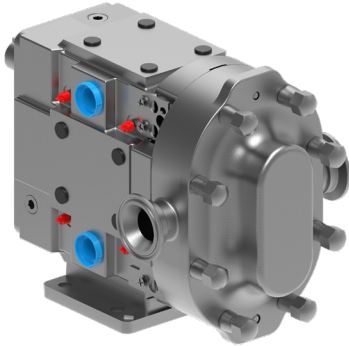
VISCOSITY
to 910,000 SSU
(200,000 cSt)



TEMPERATURE
to +300°F
(+150°C)

TRA[®]10 SERIES

CIRCUMFERENTIAL PISTON PRODUCT LINE



TYPICAL APPLICATIONS

- Dairy
- Bakery
- Meat Processing
- Foods
- Confectionary
- Paints
- Chemical

PORTING

- Complete range of hygienic clamp, screw, flange & industrial screw connections
- Tri-clamp, flanged, DIN, IMDA, NPT, BSP, etc.

SEALING

- Single O-ring
 - Standard O-rings & Cover Seals: Buna/FDA
 - Optional O-rings & Cover Seals: FKM, EPDM, Silicone
- Double O-ring with Flush
 - Standard O-rings & Cover Seals: Buna/FDA
 - Optional O-rings & Cover Seals: FKM, EPDM, Silicone
- Single Mechanical
 - Standard Seal Faces: SiC/SiC
 - Standard O-rings & Cover Seals: Buna/FDA
 - Optional Faces: Carbon, Ceramic or Chrome Oxide
 - Optional O-rings & Cover Seals: FKM, EPDM, Silicone
- Double Mechanical with Flush
 - Standard Seal Faces: SiC/SiC/C
 - Standard O-rings & Cover Seals: Buna/FDA
 - Optional Faces: Carbon, Ceramic or Chrome Oxide
 - Optional O-rings & Cover Seals: FKM, EPDM, Silicone

ROTOR & CASING OPTIONS

- 316 stainless steel pump casing standard w/ interior finished to 3-A standards
- Non-galling WFT 808[®] nickel alloy rotors standard or 316 stainless steel rotors optional
- Optional clearances: front face, hot, high temperature/high viscosity (chocolate)
- Twin Wing Rotors Standard
 - Suitable for all liquids, provides minimum pulsation
- Single Wing Rotors Optional
 - Standard Provides reduced shear on shear sensitive fluids or large solids such as fruit pieces, nut kernels, cheese curds or meats

GEAR BOX

- 304 stainless steel standard on 0060 - 2240 models
- Powder coated cast iron standard on 3200 model

FEATURES & BENEFITS

CLEANABILITY

- Easy disassembly for easy COP (Clean Out of Place)
- Designed to 3A standards

PERFORMANCE

- Efficient handling for low & high viscosity applications
- Exclusive, non-galling WFT 808[®] alloy rotors standard; permits running at tighter clearances
- High strength 17-4 PH single piece shaft standard on 0300 and larger
- Helical gears, improving load carrying capabilities

EASE OF MAINTENANCE

- Drop-in-place with TRA[®]20 & comparable manufacturer models
- Interchangeable service parts with comparable manufacturer models
- Easy disassembly



CAPACITY
to 450 GPM
(102 m³/h)



PRESSURE
to 400 PSI
(27 BAR)



VISCOSITY
to 910,000 SSU
(200,000 cSt)

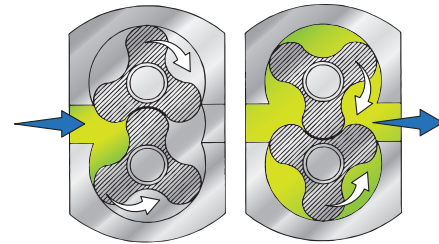


TEMPERATURE
to +300°F
(+150°C)

ROTARY LOBE

WHY? Gentle handling of high value shear sensitive liquids across hygienic and industrial applications.

- Wide range of displacements
- Good solids handling capabilities
- Low shear characteristics across a wide range of product viscosities



INCLUDED PRODUCTS

- SteriLobe® Series
- Classic+ Series™ / MultiPump® Series
- RTP® Series

ADVANTAGES

Non Contacting Pumping Principle |

No metal on metal contact, avoiding pump wear regardless of product viscosity

Shaft Sealing Options | Include single, single flushed and double mechanical seals, single and double O-ring Seals

Porting Options | Multiple porting options cover hygienic and industrial threaded, clamp and flanges arrangements

Low Shear Pump Design | Gentle handling of delicate and shear sensitive products

Solids Handling | Will handle a wide range of products including suspended solids

Hygienic Designs | Used in a wide range of hygienic industries where cleanliness is important

CERTIFICATIONS



MATERIALS OF CONSTRUCTION & CONFIGURATION OPTIONS

PRODUCT WETTED (ROTORCASE, ROTORS, ROTOR RETAINERS, FRONT COVER)

316L stainless steel, other alloys also available depending on series

GEARBOX (GEARBOX, MOUNTING FEET & BACK PLATES)

Cast iron & stainless steel, dependent on pump series & size

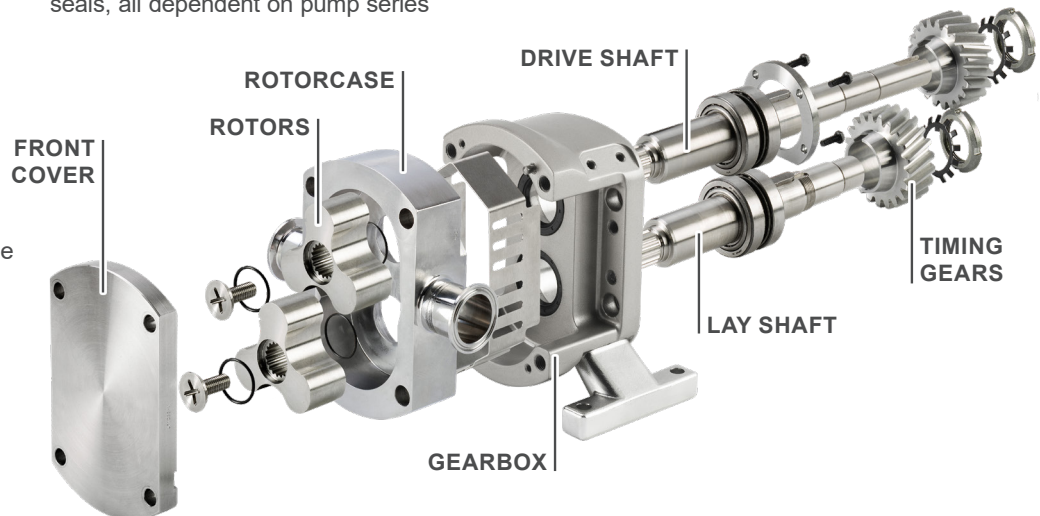
SHAFT SEALS

Single, single flushed & double mechanical seals; single & double O-ring seals; composite seals, all dependent on pump series

TYPICAL APPLICATIONS

Common rotary lobe pump applications include, but are not limited to:

- Pharmaceutical & biotech, including vaccines
- Food products: processed meats, vegetables, sauces & condiments
- Beverages: alcoholic, soft
- Dairy products: milk, cheese, yogurts
- Personal care products: shampoo, soaps, deodorants, cosmetics
- Pet foods
- Pulp & paper
- Chemicals: lubricants, paints & pigments, polymers



8



CAPACITY
to 832 GPM
(189 m³/h)



PRESSURE
to 218 PSI
(15 BAR)



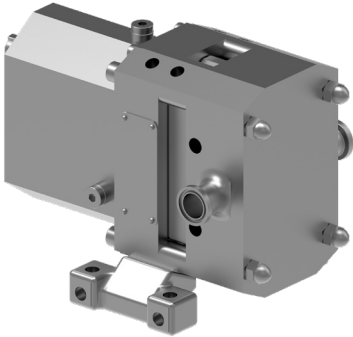
VISCOSITY
to 910,000 SSU
(200,000 cSt)



TEMPERATURE
to +300°F
(+150°C)

STERILOBE® SERIES

ROTARY LOBE PRODUCT LINE



TYPICAL APPLICATIONS

- Pharmaceutical
- Personal Care
- Foods
- Beverage
- Dairy
- Confectionary
- Chemical

PORTING

- Complete range of hygienic clamp, screw, flange & industrial screw connections
- Tri-clamp, flanged, DIN, IMDA, NPT, BSP, etc.
- DIN11864 & 11853

SEALING

- Single mechanical
- Single mechanical with flush or quench
 - Standard Seal Faces: *C/SiC*
 - Standard O-rings & Cover Seals: *EPDM/FDA*
 - Optional Faces: *SiC/SiC*
 - Optional O-rings & Cover Seals: *FKM, Buna, FFKM*
- Double mechanical with flush
 - Seal Faces: *C/SiC/SiC/C* or *SiC/SiC/SiC/C*
 - Standard O-rings & Cover Seals: *EPDM/FDA*
 - Optional Faces: *SiC/SiC*
 - Optional O-rings & Cover Seals: *FKM, Buna, FFKM*

OPTIONAL COMPLIANCE CERTIFICATION DOCUMENTATION & PERFORMANCE TESTS

- Pump Performance
- General Compliance
- Media Contact Metallic Components
- Media Contact Elastomers
- Seal Face
- Surface Finish
- Pump Assembly Inspection
- Certified Documents
- ATEX & CE

ROTOR & CASING OPTIONS

- 316L stainless steel pump casing with interior finished to Ra of 24µin (0.6µm).
- 316L stainless steel rotors
- 1.4435 low ferrite stainless steel optional
- Improved surface finishes & electropolishing optional
- Multilobe rotors
 - Provides reduced shear on shear sensitive fluids
 - Improved performance on thin liquids resulting in less pulsation at higher pressures
- Rotorcase & front cover heating / cooling jackets optional

FEATURES & BENEFITS

CLEANABILITY

- Cover joint profile improves hygienic characteristics & self-draining capabilities
- Clean & corrosion resistant stainless gear cover & bearing housing

EASE OF MAINTENANCE

- Front loading seals can be changed while the pump is still in-line
- Seal positioned for optimal lubrication, maximizing seal life
- Hassle free gearbox maintenance with sealed for life bearings

PERFORMANCE

- Multilobe rotors reduce shear & pulsation effect; ideal for sensitive media
- Innovative cusps with reliefs allow for easier cleaning and self draining with improved efficiency



CAPACITY
to 753 GPM
(171 m³/h)



PRESSURE
to 218 PSI
(15 BAR)



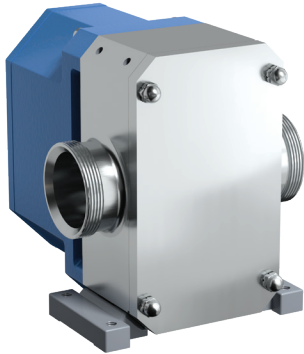
VISCOSITY
to 910,000 SSU
(200,000 cSt)



TEMPERATURE
to +300°F
(+150°C)

RTP® SERIES

ROTARY LOBE PRODUCT LINE



THE COMPLETE SOLUTION FOR YOUR HYGIENIC TANKER SYSTEM

Designed specifically for the hygienic stainless steel road tanker industry, the RTP® outperforms the competition by providing higher capacity, higher pressure and unmatched efficiency. The RTP® can also reduce loading and unloading time by over 30%.

This increased performance, along with advanced durability, application flexibility, ease of installation and ease of maintenance provide a complete solution for your hygienic tanker needs.

TYPICAL APPLICATIONS

- High Fructose Corn Syrup
- Chocolate
- Milk and Dairy
- Vinegar
- Fruit Juice
- Vegetable Oils

PORTING

- Camlock, ACME & DIN 11851 ports available

SEALING

- Single / Double O-ring
- Dry-run capable composite O-ring seals
- Mechanical seals
- Complete range of material options

GEAR BOX

- Ingress protected and sealed lightweight aluminum gearbox

ROTOR & CASING OPTIONS

- 316L stainless steel pump casing standard with interior finished to 3-A standards
- High efficiency rotors for low viscosity fluids

MOUNTING

- SAE 2 & 4 bolt mounting flange for close coupled hydraulic drive applications

OPTIONS

- Optional pressure relief valve to protect pump against excess pressure spikes

FEATURES & BENEFITS

CLEANABILITY

- The simple design behind the rotor makes strip cleaning easy and fast
- Choose the cleaning process that fits your needs: COP (Clean Out of Place) or CIP (Clean In Place)

EASE OF MAINTENANCE

- Innovative front loading seal design enables quick inspection and easy servicing
- Sealed gearcase with long-life lubrication eliminates oil inspection and filling
- Easy to service design requires no special tools for disassembly and eliminates need for end clearance adjustments

PERFORMANCE

- Easily handles higher viscosity liquids with improved pressure capabilities for faster unloading
- Excellent displacement/weight ratios, meaning more in the tank & less in the cabinet
- Precision helical gears, rotors & shaft design, with optimized bearing position, minimize overhung load – extending seal & bearing life

10



CAPACITY
to 338 GPM
(76.8 m³/h)



PRESSURE
to 174 PSI
(12 BAR)



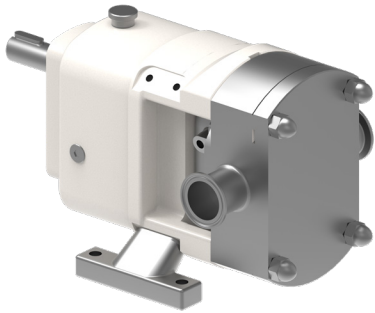
VISCOSITY
to 910,000 SSU
(200,000 cSt)



TEMPERATURE
to +300°F
(+150°C)

CLASSIC+ SERIES™ / MULTIPUMP® SERIES

ROTARY LOBE PRODUCT LINE



TYPICAL APPLICATIONS

- | Pharmaceutical
- | Personal Care
- | Foods
- | Beverage
- | Dairy
- | Confectionary
- | Chemical

PORTING

- | Complete range of hygienic clamp, screw, flange & industrial screw connections
- | Tri-clamp, flanged, DIN, IMDA, NPT, BSP, etc.

SEALING

- | Single mechanical
- | Single mechanical with flush or quench
- | Double mechanical with flush
- | Complete range of material options

GEAR BOX

- | Powder-coated or painted standard (size dependent)

ROTOR & CASING OPTIONS

- | 316L stainless steel pump casing with interior finished to 3-A standards
- | 316L stainless steel rotors
- | Improved surface finishes & electropolishing optional
- | Front cover jacket or rotorcase saddles

FEATURES & BENEFITS

CLEANABILITY

- | Modular pump design promotes easy disassembly for COP (Clean Out of Place) & CIP (Clean In Place)
- | Casing profile cusps maximize efficiency & draining capability

PERFORMANCE

- | Timed, non-contacting rotors minimize shear while providing extended run-dry capability
- | Helical timing gears provide high torque & quieter operation for extended pump life
- | Tapered roller bearings provide higher operating speeds & better discharge pressures

EASE OF MAINTENANCE

- | Removable foot for easier placement
- | Classic RLP design



CAPACITY
to 832 GPM
(189 m³/h)



PRESSURE
to 174 PSI
(12 BAR)



VISCOSITY
to 910,000 SSU
(200,000 cSt)

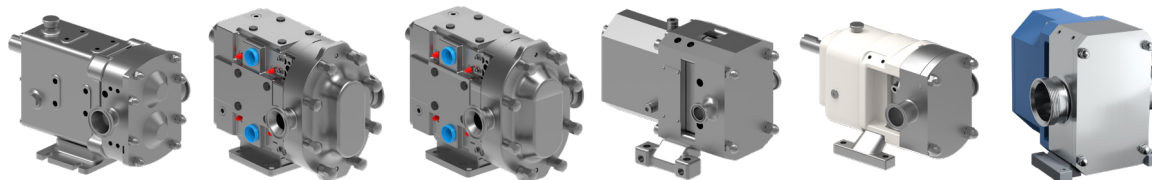


TEMPERATURE
to +355°F
(+180°C)

PRODUCT QUICK VIEW

CIRCUMFERENTIAL PISTON

ROTARY LOBE



Revolution®
Series

TRA®10
Series

TRA®20
Series

Sterilobe®
Series

Classic+
Series™
/ Multipump®
Series

RTP®
Series

PERFORMANCE

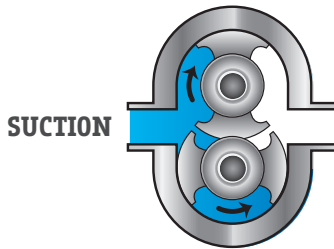
Maximum Flow – LPM	1,510	1,703	1,703	2,850	3,149	1,279
Maximum Flow – m ³ /h	91	102	102	171	189	77
Maximum Flow – USGPM	399	450	450	753	832	338
Maximum Pressure – BAR	31	27	34	15	12	12
Maximum Pressure – PSI	450	400	500	218	174	174
Maximum Viscosity – cSt	200,000	200,000	200,000	200,000	200,000	200,000
Maximum Viscosity – SSU	910,000	910,000	910,000	910,000	910,000	910,000
Temperature Range – °C	to +150°C	to +150°C	to +150°C	to +150°C	to +180°C	to +150°C
Temperature Range – °F	to +300°F	to +300°F	to +300°F	to +300°F	to +355°F	to +300°F

CERTIFICATIONS

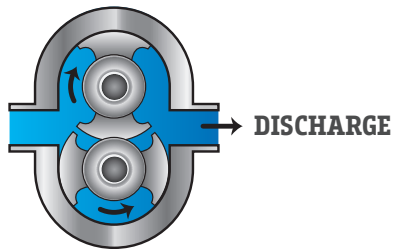
3-A	✓	✓	✓	✓	✓	✓
ATEX	✓	✓	✓	✓	✓	✓
CE	✓	✓	✓	✓	✓	✓

HOW IT WORKS

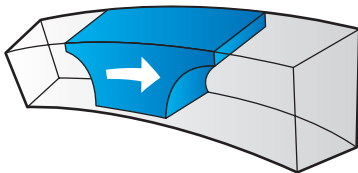
CIRCUMFERENTIAL PISTON



Rotor wings (pistons) rotate around the circumference of the channel in the pump casing. This continuously generates a partial vacuum at the suction port as the rotors unmesh, causing fluid to enter the pump.



The fluid is transported around the channel by the rotor wings & is displaced as the rotor wings re-mesh, generating pressure at the discharge port. Pump output is directly proportional to speed & direction of flow is reversible.



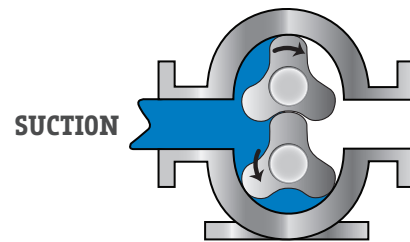
The deep channels in which the rotors travel provide large voids to minimize shear and bruising of solids.



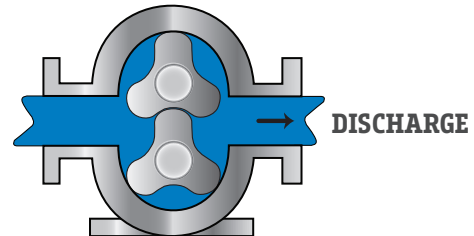
CHECK OUT OUR VIDEO

Learn more about how circumferential piston pumps work

ROTARY LOBE



Rotor lobes rotate around the circumference of the channel in the pump casing. This continuously generates a partial vacuum at the suction port as the rotors unmesh, causing fluid to enter the pump.



The fluid is transported around the channel by the rotor lobes, & is displaced as the rotor lobes re-mesh, generating pressure at the discharge port. Pump output is directly proportional to speed, and direction of flow is reversible.



CHECK OUT OUR VIDEO

Learn more about how rotary lobe pumps work

PARTS & KITS

Viking Pump® parts kits provide customers with the ability to do a complete repair at once vs. each time a part wears. Everything needed is included in the kit, ready before you open the pump. Both seal kits and repair kits are available. Reduce your downtime by contacting your local stocking distributor to have a kit on your shelf ready to go when it is needed.



DESIGN

- Only Viking Genuine Parts are specifically designed to meet performance requirements for Viking pumps



QUALITY

- Viking Genuine Parts are tested to ensure optimum reliability



SUPPORT

- Viking backs all Genuine Parts with its own warranty and stocking distributor network

PARTS KITS VS. PARTIAL REPAIR



Everything you need in one place



Save time & money



Increase uptime



Increase service life



Reduce frequency of repairs



WHY REMANUFACTURE?

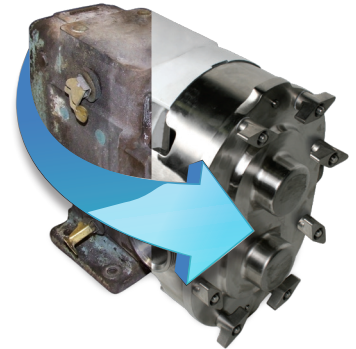
(Unique to circumferential piston products)

- Worn pump is returned to **like-new** condition & performance
- Your remanufactured pump carries a full 1 year **factory warranty**
- All remanufactured pumps are **factory tested**
- Save big** compared to purchasing an entirely new pump
- Pumps can be remanufactured up to **four times**, depending on model & wear



WHAT YOU GET

- NEW** Rotors
- NEW** Bearings
- NEW** Seal Components
- NEW** Shafts
- NEW** Gears



REBUILD VS. REPLACE

- Hygienic parts kits are designed to save time and money, making preventive maintenance and rebuilding easier and more cost-effective
- Hygienic pumps are designed and built to the highest standards, for long life and to be rebuilt instead of replaced when applicable
- Tool kits also available



PUMP & DRIVE UNITS

FACTORY ASSEMBLED SYSTEMS

Ordering complete pump & drive units saves time & money. These systems include pump, base plate, motor, couplings, guards & speed reduction if needed. Close & long coupled styles are available.

CONVENIENT & COMPLETE

- One stop shop – get your pump & motor from one supplier
- Pre-alignment from factory minimizes final alignment at installation
- Competitive pricing direct through Viking Pump
- Single source responsibility
- Custom engineered bases to fit customer specifications

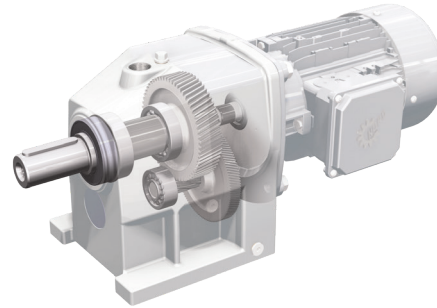
CUSTOM CONFIGURATIONS AVAILABLE

- Viking Pump® has a staff of design engineers to fulfill custom requests for complete pump & drive units
- All major brands & types of motors, drives & reducers available
- Special materials & designs; portable & permanent
- Several testing & compliance certification options available

EASY SELECTION

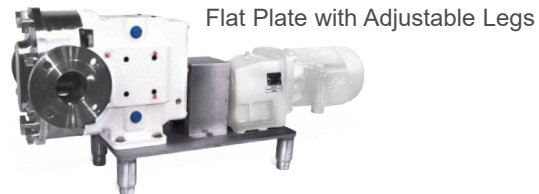
1 CHOOSE YOUR PUMP

2 CHOOSE FROM A STANDARD SELECTION OF WASHDOWN DUTY GEAR MOTORS

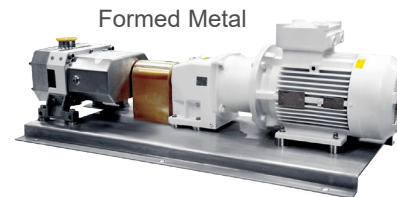


Integrated motor & reducer. Compact footprint.

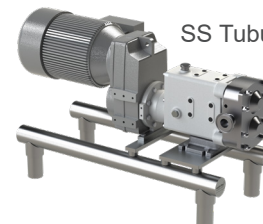
3 CHOOSE FROM THREE STANDARD UNIT CONFIGURATIONS



Flat Plate with Adjustable Legs



Formed Metal



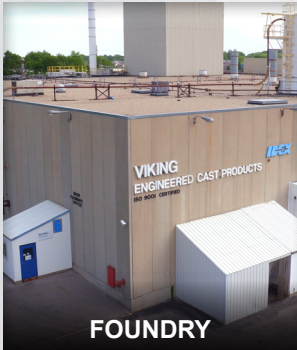
SS Tubular 3A Approved Design

VERTICAL INTEGRATION

Viking Pump operates a foundry, a 250,000+ sq. ft. machining, assembly and testing center, and an extensive product engineering and testing lab in its world headquarters in Cedar Falls, Iowa, USA. This level of vertical integration ensures maximum quality, ability to satisfy special needs, and to meet project schedules.



MELT & MOLD



FOUNDRY



MACHINING



US MACHINE SHOP



TESTING



SHAKEOUT,
CHIP & GRIND



ASSEMBLY



UK FACILITY



WORLD HQ - USA

SALES TOOLS



WEBSITE

VIKINGPUMP.COM



LITERATURE

VIKINGPUMP.COM/DOWNLOADS



VIDEOS

VIKINGPUMP.COM/VIKINGTV

**VIKING
PUMP®**
HYGIENIC

VIKING PUMP HYGIENIC

Highfield Industrial Estate, Edison Road, Eastbourne
East Sussex, United Kingdom, BN23 6PT

vikingpump.com

ASCO Pompy sp. z o.o.

Ujastek 5b/8b, 31-752 Krakow, Poland
ascopompy.pl

Official Viking Pump Hygienic distributor in Poland

IPEX