



VIKING PUMP[®]

PRODUCT CATALOG

GLOBAL LEADER IN POSITIVE
DISPLACEMENT PUMPING SOLUTIONS

MARKETS & APPLICATIONS



WE HAVE THE PRODUCTS FOR YOUR INDUSTRY

We have experience with thousands of liquids that allow us to deliver proven solutions for your application, whether it is thin / thick, hot / cold, edible / toxic, liquid / solid and much more.



CHEMICALS

- | Acids & Bases
- | Alcohols & Solvents
- | Soaps & Detergents



POLYMERS

- | Rubbers & Plastics
- | Fibers & Resins
- | Polyurethanes



OILS

- | Crude Oils
- | Lube Oil & Greases
- | Asphalt & Bitumens



FUELS

- | Refined Fuels
- | Biofuels
- | Liquefied Gases



PHARMACEUTICAL

- | Medicinal Chemicals
- | Creams & Ointments
- | Blood & Plasma Processing



MACHINERY

- | Fuel & Lube
- | Heat Transfer Liquids
- | Filtration



FOODS

- | Liquid Sugars
- | Chocolate & Confectionery
- | Edible Oils



DAIRY

- | Butter
- | Cheese
- | Cream



PULP & PAPER

- | Coatings
- | Starch
- | Black Liquor Soap



PERSONAL CARE

- | Lotions & Creams
- | Toothpaste
- | Hair & Skin Care



WATER & WASTEWATER

- | Methanol
- | Polymers
- | Additives



COATINGS & SEALANTS

- | Paints, Dyes & Inks
- | Adhesives
- | Caulks



BEVERAGES

- | Distillers & Vinters
- | Fruit & Vegetable Purees
- | Carbonated Drinks



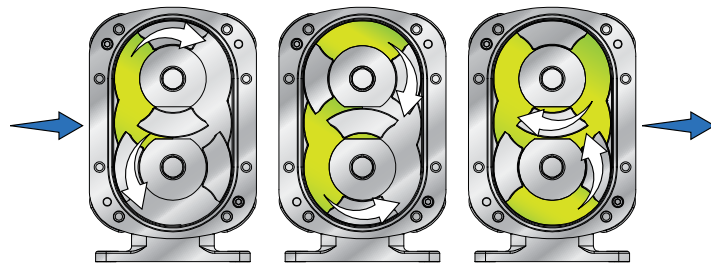
 CONTACT DISTRIBUTOR

VIKING PUMP®

CIRCUMFERENTIAL PISTON PUMPS

WHY? Gentle handling of high value shear sensitive liquids across hygienic and industrial applications.

- Wide range of displacements with high pressure capabilities
- Excellent at solids handling
- Low shear characteristics across a wide range of product viscosities



INCLUDED PRODUCTS

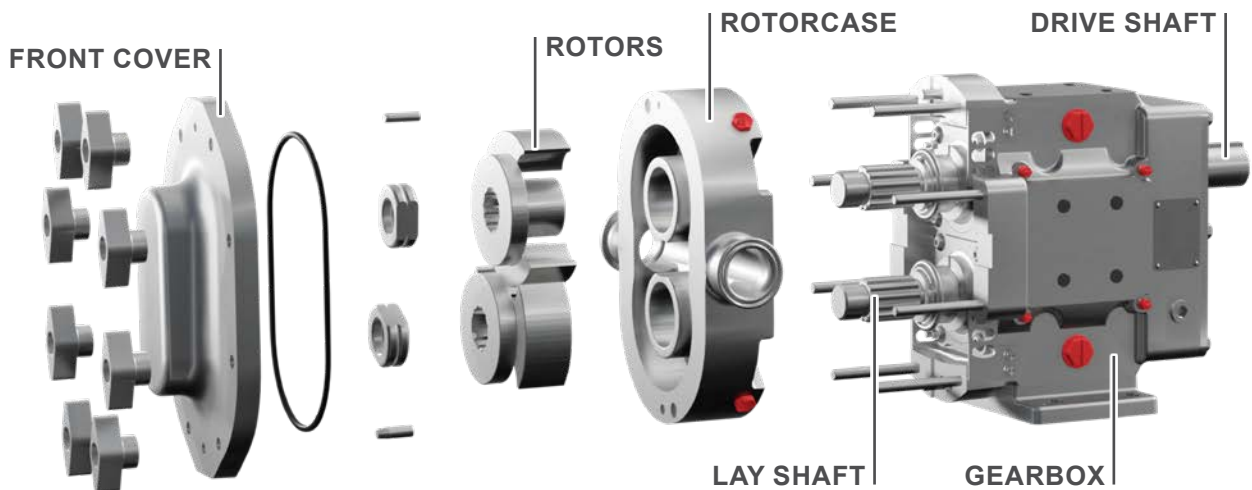
- Revolution® Series
- TRA®20 Series
- TRA®10 Series

CERTIFICATIONS



Learn how circumferential piston pumps work

KEY PUMPING ELEMENTS



MATERIALS OF CONSTRUCTION & CONFIGURATION OPTIONS

PRODUCT WETTED

Rotorcase, Rotor Retainers, Front Cover:
316 / 316L stainless steel

Rotors:
Alloy 808 & 316 / 316L stainless steel

GEARBOX (GEARBOX, MOUNTING FEET & BACK PLATES)

Stainless Steel & cast iron, dependent on pump series & size

SHAFT SEALS

Single & double mechanical seals, single & double O-ring seals

TYPICAL APPLICATIONS

Common circumferential piston pump applications include, but are not limited to:

- Food products: processed meats, vegetables, sauces & condiments
- Confectionary: chocolate, fondants
- Beverages: alcoholic, soft
- Dairy products: milk, cheese, yogurts
- Personal care products: shampoo, soaps, deodorants, cosmetics
- Pet foods
- Pulp & paper
- Chemicals: lubricants, paints & pigments, polymers

Circumferential Piston Pumps are widely used in many hygienic and industrial fluid handling applications where gentle handling, cleanability and efficiency are paramount.

ADVANTAGES

Shaft Sealing Options | Include single & double mechanical seals, single & double O-ring seals

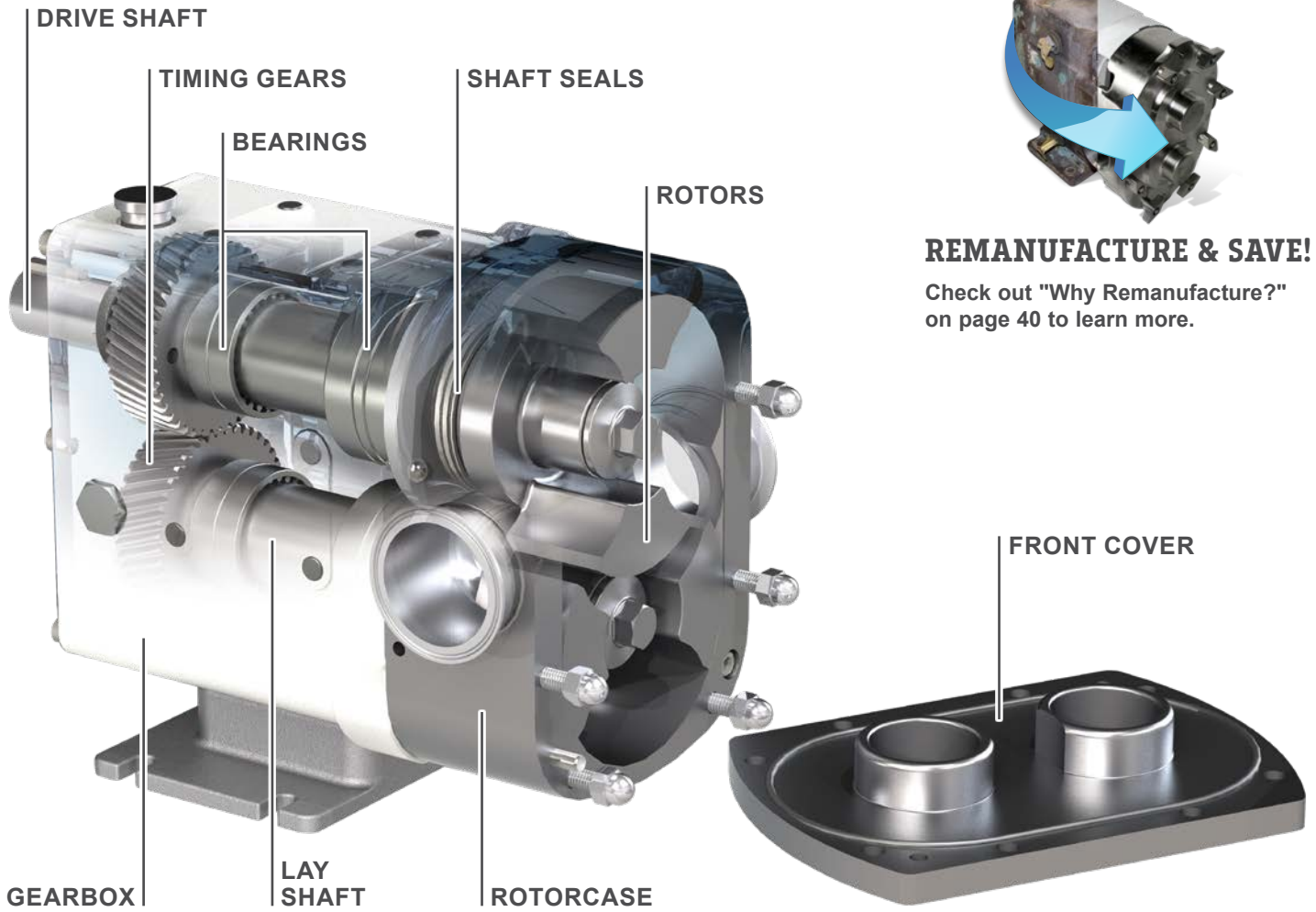
Porting Options | Multiple porting options cover hygienic and industrial threaded, clamp and flanges arrangements

Low Shear Pump Design | Gentle handling of delicate and shear sensitive products

Solids Handling | Will handle a wide range of products including suspended solids

Efficiency | High volumetric efficiency on low viscosity products

Hygienic Designs | Used in a wide range of hygienic industries where cleanliness is important



REMANUFACTURE & SAVE!

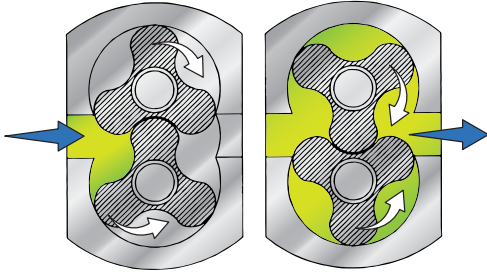
Check out "Why Remanufacture?" on page 40 to learn more.

 CAPACITY to 450 GPM (102 m ³ /h)	 PRESSURE to 500 PSI (34 BAR)	 VISCOSITY to 2,000,000 SSU (440,000 cSt)	 TEMPERATURE to +300°F (+150°C)
--	---	---	---

ROTARY LOBE PUMPS

WHY? Gentle handling of high value shear sensitive liquids across hygienic and industrial applications.

- Wide range of displacements
- Good solids handling capabilities
- Low shear characteristics across a wide range of product viscosities



INCLUDED PRODUCTS

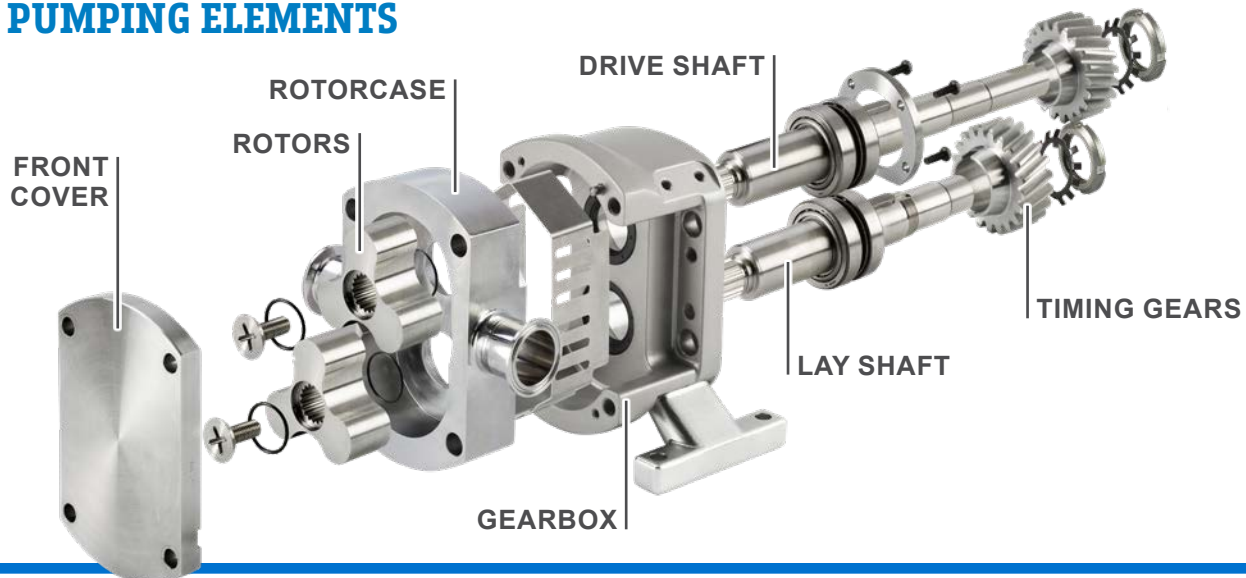
- SteriLobe® Series
- Revolution® Series
- RTP® Series
- Classic+ Series™ / MultiPump® Series

CERTIFICATIONS



Learn how rotary lobe pumps work

KEY PUMPING ELEMENTS



MATERIALS OF CONSTRUCTION & CONFIGURATION OPTIONS

PRODUCT WETTED (ROTORCASE, ROTORS, ROTOR RETAINERS, FRONT COVER)

316L stainless steel, other alloys also available

GEARBOX (GEARBOX, MOUNTING FEET & BACK PLATES)

Cast iron & stainless steel, dependent on pump series & size

SHAFT SEALS

Single, single flushed & double mechanical seals; single & double O-ring seals; packed glands; composite seals, all dependent on pump series

TYPICAL APPLICATIONS

Common rotary lobe pump applications include, but are not limited to:

- Pharmaceutical & biotech, including vaccines
- Food products: processed meats, vegetables, sauces & condiments
- Confectionary: chocolate, fondants
- Beverages: alcoholic, soft
- Dairy products: milk, cheese, yogurts
- Personal care products: shampoo, soaps, deodorants, cosmetics
- Pet foods
- Pulp & paper
- Chemicals: lubricants, paints & pigments, polymers

Rotary Lobe Pumps are the mainstay of many hygienic & industrial fluid handling applications where gentle handling & cleanability are paramount.

ADVANTAGES

Non Contacting Pumping Principle | No metal on metal contact, avoiding pump wear regardless of product viscosity

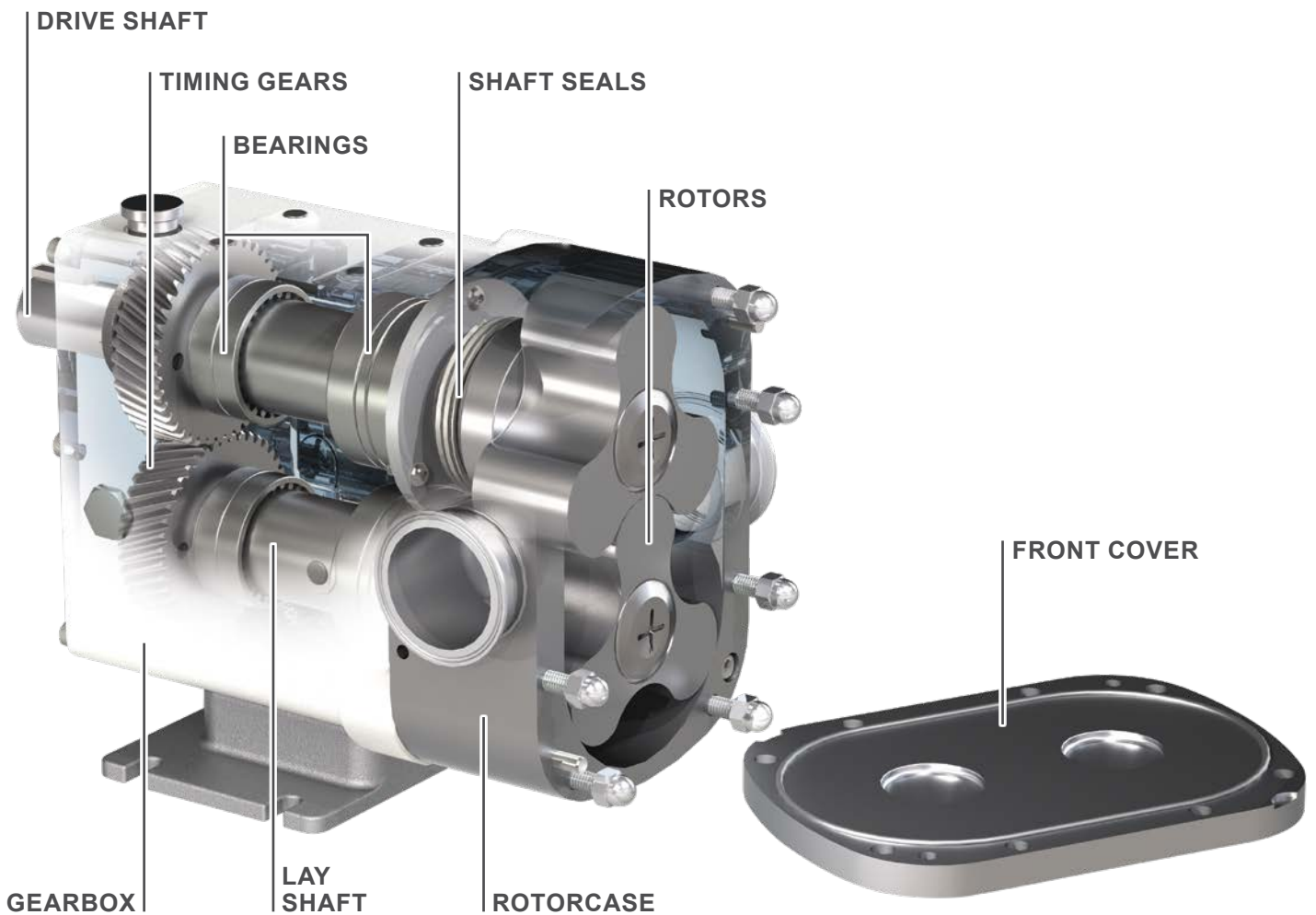
Shaft Sealing Options | Include single, single flushed and double mechanical seals, single and double O-ring Seals and packed glands

Porting Options | Multiple porting options cover hygienic and industrial threaded, clamp and flanges arrangements

Low Shear Pump Design | Gentle handling of delicate and shear sensitive products

Solids Handling | Will handle a wide range of products including suspended solids

Hygienic Designs | Used in a wide range of hygienic industries where cleanliness is important



CAPACITY
to 832 GPM
(189 m³/h)



PRESSURE
to 218 PSI
(15 BAR)



VISCOSITY
to 2,000,000 SSU
(440,000 cSt)

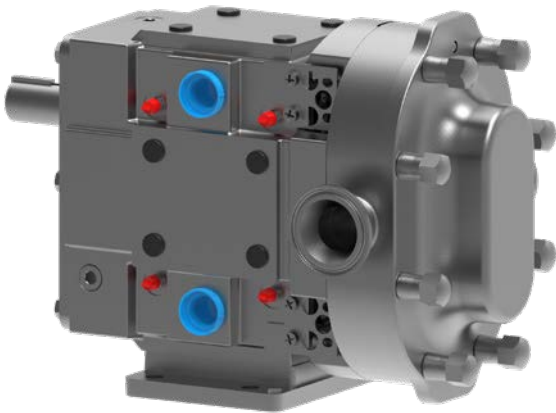


TEMPERATURE
to +300°F
(+150°C)



CONTACT DISTRIBUTOR

VIKING PUMP®

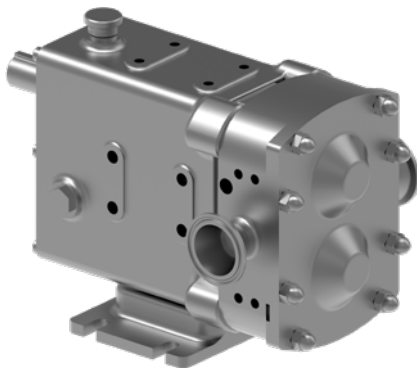


FEATURES & BENEFITS

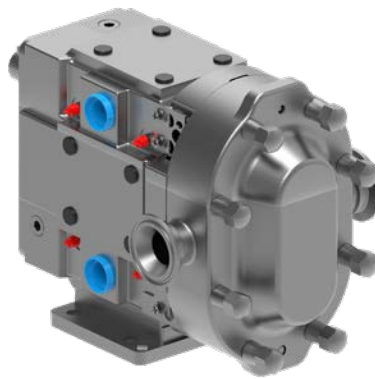
- Low shear pump design for gentle handling of delicate and shear sensitive products
- Handles a wide range of products including suspended solids
- High volumetric efficiency on low viscosity products
- Used in a wide range of hygienic industries where cleanliness is important

TYPICAL APPLICATIONS

- Dairy
- Bakery
- Meat Processing
- Foods
- Beverage
- Confectionary
- Personal Care
- Pharmaceutical
- Paints
- Chemical



Revolution® Series



TRA®20 Series



TRA®10 Series



PORTING

- Hygienic port options: Tri-clamp, DIN 11864, DIN 11851 Male, SMS Male (Revolution®)
- Industrial port options: ASA/ANSI 150 lb. or 300 lb. RF, DIN 2633, BSP Male, NPT Male (Revolution®)
- Complete range of hygienic clamp, screw, flange & industrial screw connections (TRA)
- Tri-clamp, flanged, DIN, IMDA, NPT, BSP, etc. (TRA)
- Rectangular flange/hopper inlet available on select sizes

Refer to "Appendix B" on page 43 for more information on seals and porting.

SEALING

- Single mechanical
- Double mechanical w/ flush
- Single O-ring (Revolution®, TRA®10)
- Double O-ring w/ flush (Revolution®, TRA®10)

ROTORS

- Non-galling WFT 808® nickel alloy standard
- Optional clearances: front face, hot, high temperature/high viscosity (chocolate)
- Twin wing rotors standard, single wing rotors optional (TRA)

GEAR BOX

- Stainless steel



CAPACITY
to 450 GPM
(102 m³/h)



PRESSURE
to 500 PSI
(34 BAR)

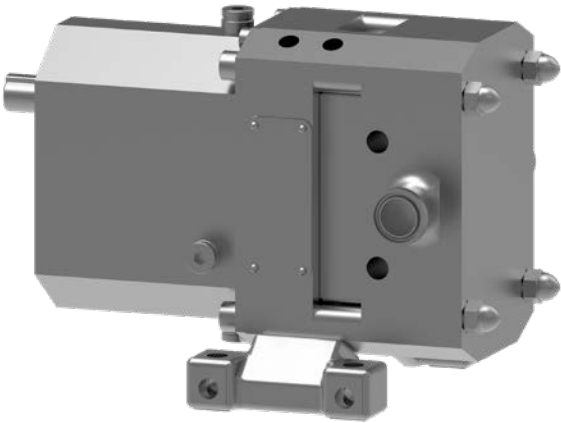


VISCOSITY
to 2,000,000 SSU
(440,000 cSt)



TEMPERATURE
to +300°F
(to +150°C)

ROTARY LOBE PRODUCT LINE | STAINLESS STEEL

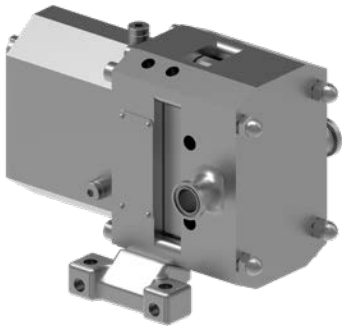


FEATURES & BENEFITS

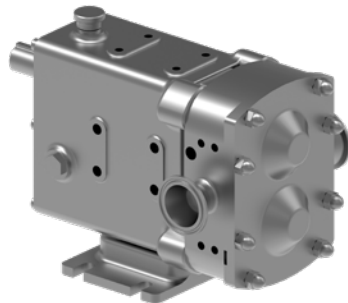
- Low shear pump design for gentle handling of delicate and shear sensitive products
- Handles a wide range of products including suspended solids
- High volumetric efficiency on low viscosity products
- Used in a wide range of hygienic industries where cleanliness is important

TYPICAL APPLICATIONS

- Pharmaceutical
- Personal Care
- Foods
- Beverage
- Dairy
- Confectionary
- Chemical
- High Fructose Corn Syrup
- Vinegar
- Vegetable Oils



SteriLobe® Series



Revolution® Series



Classic+ / MultiPump® Series



RTP® Series



PORTING

- Complete range of hygienic clamp, screw, flange & industrial screw connections (C+/MP)
- Tri-clamp, flanged, DIN, IMDA, NPT, BSP, etc. (C+/MP)
- Hygienic port options: Tri-clamp, DIN 11864, DIN 11851 Male, SMS Male (Revolution®)
- Industrial port options: ASA/ANSI 150 lb. or 300 lb. RF, DIN 2633, BSP Male, NPT Male (Revolution®)
- Rectangular flange/hopper inlet available on select sizes (Rev)
- Camlock, ACME & DIN 11851 ports available (RTP®)

SEALING

- Single O-ring (C+/MP, Rev, RTP®)
- Single mechanical (C+/MP, Rev)
- Single mechanical with flush or quench (C+/MP)
- Double O-ring (RTP®)
- Double O-ring with flush (Rev)
- Double mechanical with flush (C+/MP, Rev)
- Gland packing (C+/MP)
- Gland packing with lantern ring with flush (C+/MP)
- Mechanical Seals (RTP®)

ROTORS

- 316L standard
- Optional clearances: Different temperature clearance bands available dependent on application and cleaning requirements

GEAR BOX

- Stainless Steel, Powder coated or painted cast Iron dependent on series and model
- Oil lubrication standard, grease optional (Revolution®)
- Ingress protected and sealed lightweight aluminum gearbox (RTP®)

Refer to "Appendix B" on page 43 for more information on seals and porting.



CAPACITY
to 832 GPM
(189 m³/h)



PRESSURE
to 218 PSI
(15 BAR)



VISCOSITY
to 2,000,000 SSU
(440,000 cSt)



TEMPERATURE
to +300°F
(+150°C)

PARTS & ACCESSORIES



There are millions of Viking pumps installed throughout the world. Our parts and accessories are built to keep them running efficiently and make repairs easy.

Not all parts are created equal. Viking Genuine Parts come with a guarantee to dimensionally fit Viking products, as well as having consistent construction, including material grade and quality.

Whether purchasing an individual part, ordering a full repair kit, or choosing an accessory to make your systems work smoothly, ensure that you are maintaining your Viking pumps with the same quality of parts that it left the factory with. Choose Viking Genuine Parts when servicing your pumps. Reach out to your local stocking distributor to get parts on your shelves for proactive operational management.

PARTS & KITS



Viking Pump parts kits provide customers with the ability to do a complete repair at once vs. each time a part wears. Everything needed is included in the kit, ready before you open the pump. Both seal kits and repair kits are available. Reduce your downtime by contacting your local stocking distributor to have a kit on your shelf ready to go when it is needed.



DESIGN

- Only Viking Genuine Parts are specifically designed to meet performance requirements for Viking pumps



QUALITY

- Viking Genuine Parts are tested to ensure optimum reliability



SUPPORT

- Viking backs all Genuine Parts with its own warranty and stocking distributor network

PARTS KITS VS. PARTIAL REPAIR



Everything you need in one place



Save time & money



Increase uptime



Increase service life



Reduce frequency of repairs



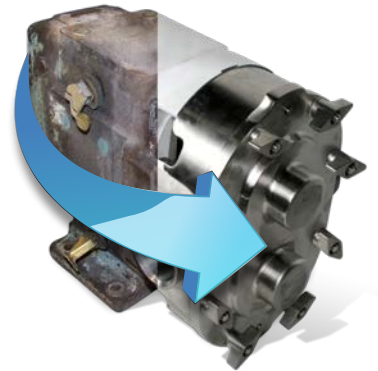
WHY REMANUFACTURE?

(Unique to circumferential piston products)

- Worn pump is returned to like-new condition & performance
- Your remanufactured pump carries a full 1 year factory warranty
- All remanufactured pumps are tested & certified
- Save big compared to purchasing an entirely new pump
- Pumps can be remanufactured up to four times, depending on model & wear

WHAT YOU GET

- NEW Rotors
- NEW Bearings
- NEW Seal Components
- NEW Shafts
- NEW Gears



REBUILD VS. REPLACE

- Hygienic parts kits are designed to save time and money, making preventive maintenance and rebuilding easier and more cost-effective
- Hygienic pumps are designed and built to the highest standards, for long life and to be rebuilt instead of replaced when applicable
- Tool kits also available





REVOLUTION® SERIES

CIRCUMFERENTIAL PISTON PRODUCT LINE & ROTARY LOBE PRODUCT LINE



FEATURES & BENEFITS

CLEANABILITY

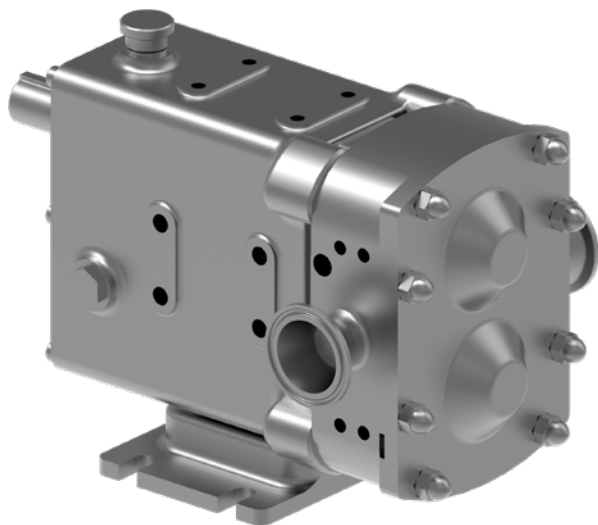
- Efficient CIP (Clean In Place) ability is standard for all Revolution pumps
- Self draining pump head from innovative cusps & cusp reliefs
- Innovative seal design with no dead zones & a dynamic leak path
- No dead zones on front cover

EASE OF MAINTENANCE

- Fast, front loading seal changes while pump is still in line
- Front access shimming for setting rotor clearance significantly reduces maintenance time
- Convenient preventive maintenance parts kits available

PERFORMANCE

- Improved volumetric efficiency in low & high viscosity applications
- Up to 15% better flow performance than competitors' CIP configuration with CPP version
- Gentle handling of solids & shear sensitive products
- Long-life durability from heavy duty shafts, bearings & helical gears
- Less overhung load



PERFORMANCE

CPP MODELS

Size	Model	Max Capacity		Displacement		Max Pressure		Max Speed	Standard Ports	
		GPM	m³/h	USG/rev.	l/rev.	PSI	BAR	RPM	In	mm
2	R0150X	11	2.6	0.014	0.055	305	21	800	1.5	38.1
2	R0180P	23	5.3	0.029	0.11	203	14	800	1.5	38.1
3	R0200X	34	8	0.04	0.16	305	21	800	1.5	38.1
3	R0300X	48	11	0.06	0.23	247	17	800	1.5	38.1
3	R0400X	62	14	0.08	0.29	203	14	800	2	50.8
4	R0450X	67	15	0.1	0.42	450	31	600	2	50.8
4	R0600P	92	21	0.2	0.58	305	21	600	2.5	63.5
4	R0800X	122	28	0.2	0.77	247	17	600	2.5	63.5
4	R1300X	159	36	0.3	1	203	14	600	3	76.2
5	R1800X, R1830X	231	53	0.4	1.46	450	31	600	3	76.2
5	R2200X, R2230X	313	71	0.5	1.98	305	21	600	4	101.6
5	R2600P, R2630P	399	91	0.7	2.52	203	14	600	4	101.6

RECTANGULAR FLANGE MODELS

Model	Max Capacity		Displacement		Max Pressure		Max Speed	Inlet (WxL)		Outlet	
	GPM	m³/h	USG/rev.	l/rev.	PSI	BAR	RPM	In	mm	In	mm
0340	11	48	0.06	0.23	247	17	800	1.85 x 6.81	47 x 175	2	50.8
0640	21	92	0.2	0.58	305	21	600	2.36 x 8.90	60 x 226	2.5	63.5
1340	36	159	0.3	1	203	14	600	3.19 x 9.29	81 x 236	3	76.2
2240	71	313	0.5	1.98	305	21	600	4.06 x 11.22	103 x 285	4	101.6



CAPACITY
to 399 GPM
(91 m³/h)



PRESSURE
to 450 PSI
(31 BAR)



VISCOSITY
to 910,000 SSU
(200,000 cSt)



TEMPERATURE
to +300°F
(+150°C)

RLP MODELS

Size	Model	Max Capacity		Displacement		Max Pressure		Max Speed	Standard Ports	
		GPM	m ³ /h	USG/rev.	l/rev.	PSI	BAR	RPM	In	mm
2	R0150X	16	3.6	0.016	0.061	218	15	1000	1.5	38.1
2	R0160L	22	4.9	0.021	0.081	145	10	1000	1.5	38.1
2	R0180L	29	6.6	0.029	0.11	102	7	1000	1.5	38.1
3	R0200X	47	11	0.05	0.18	203	14	1000	1.5	38.1
3	R0300X	66	15	0.07	0.25	131	9	1000	1.5	38.1
3	R0400X	86	20	0.09	0.33	102	7	1000	2	50.8
4	R0450X	95	22	0.1	0.45	218	15	800	2	50.8
4	R0800X	173	39	0.2	0.82	131	9	800	2.5	63.5
4	R1300X	226	51	0.3	1.07	102	7	800	3	76.2
5	R1800X	246	56	0.4	1.55	218	15	600	3	76.2
5	R2200X	333	76	0.6	2.1	116	8	600	4	101.6

PORTING

- Hygienic port options:
Tri-clamp, DIN 11864, DIN 11851 Male, SMS Male
- Industrial port options:
ASA/ANSI 150 lb. or 300 lb. RF, DIN 2633, BSP Male, NPT Male
- Rectangular flange/hopper inlet available on select sizes
- Pumps may be fitted with front cover and rotor case jackets when required

SEALING

- Single mechanical
- Double mechanical w/ flush
- Single O-ring running on a replaceable sleeve
- Double O-ring w/ flush running on a replaceable sleeve
- Complete range of material options

ROTORS

- Non-galling WFT 808® nickel alloy standard for CPP
- 316L standard for RLP and optional for CPP
- Optional clearances:
front face, hot, high temperature/high viscosity (chocolate)

GEAR BOX

- Powder coated cast iron standard
- Stainless steel optional
- Oil lubrication standard, grease optional

SURFACE FINISH

- Standard 32 RA internal finish
- Optional mechanical internal finishes: 24 RA or 16 RA

COMPLETE PUMP DRIVE UNITS

- We make it simple to select your pump, drive and base configuration for ordering a complete unit
- Close coupled and long coupled designs available
- Tubular, flat plate and formed metal base designs available

TYPICAL APPLICATIONS

- Pharmaceutical
- Beverage
- Chemical
- Personal Care
- Dairy
- Foods
- Confectionary

BENEFITS OF MAINTENANCE KITS

- Everything you need in one place
- Reduce frequency of repairs
- Increase service life
- Increase uptime
- Save time & money
- Kits include exploded diagram & parts list



VIKING PUMP®

VIKING PUMP, INC.
A Unit of IDEX Corporation
406 State Street
Cedar Falls, Iowa 50613 U.S.A.
vikingpump.com

CONTACT YOUR STOCKING DISTRIBUTOR TODAY

GLOBAL LEADER IN POSITIVE DISPLACEMENT PUMPING SOLUTIONS: Cedar Falls, Iowa, USA | Windsor, Ontario, Canada | Shannon, Ireland | Eastbourne, United Kingdom

IDEX

© Copyright 2022 Viking Pump, Inc. All Rights Reserved. Rev0522 | Form No. 1726



TRA®20 SERIES™

CIRCUMFERENTIAL PISTON PRODUCT LINE



FEATURES & BENEFITS

CLEANABILITY

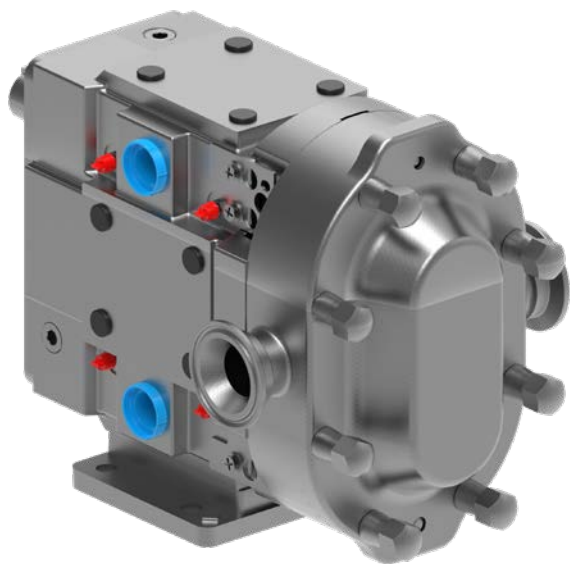
- CIP (Clean In Place) design optional
- Free draining cover with flat body profile option
- Sealed shaft with o-ring on rotor & rotor nut

PERFORMANCE

- Efficient handling for low & high viscosity applications
- Exclusive, non-galling WFT 808® alloy rotors standard; permits running at tighter clearances
- High strength 17-4 PH single piece shaft standard
- Improved load carrying capabilities

EASE OF MAINTENANCE

- Drop-in-place with TRA®10 & comparable manufacturer models
- Interchangeable service parts with comparable manufacturer models
- Stainless steel bearing retainers standard, prevent rusting



PERFORMANCE

MODELS

Model	Displacement		Max Pressure		Max Speed	Standard Ports		Max Capacity	
	USG/rev.	l/rev.	PSI	BAR	RPM	In	mm	GPM	m³/h
0060	0.008	0.03	300	21	1000	1	25.4	8	1.8
0150	0.014	0.052	250	17	800	1.5	38	11	2.5
0180	0.029	0.108	200	14	700	1.5	38	20	4.5
0300	0.06	0.227	250	17	600	1.5	38	36	8.2
0450	0.096	0.366	450	31	600	2	51	58	13.2
0600	0.15	0.568	300	21	600	2.5	64	90	20.4
1300	0.25	0.946	200	14	600	3	76	150	34.1
1800	0.383	1.45	450	31	600	3	76	230	52.2
2100	0.5	1.89	500	34	600	4	102	300	68.1
2200	0.516	1.95	300	21	600	4	102	310	70.4
3200	0.75	2.85	300	21	600	6	152	450	102

RECTANGULAR FLANGE MODELS

Model	Displacement		Max Pressure		Max Speed	Inlet (WxL)		Outlet		Max Capacity	
	USG/rev.	l/rev.	PSI	BAR	RPM	In	mm	In	mm	GPM	m³/h
0340	0.06	0.23	200	14	400	1.75 x 6.75	44.50 x 171.45	1.5	38.1	24	5.4
0640	0.15	0.57	200	14	400	2.24 x 8.82	56.90 x 224.03	2.5	57.15	60	13.6
1340	0.25	0.95	200	14	400	2.97 x 9.25	75.44 x 234.95	3	76.2	100	22.7
2240	0.52	1.95	200	14	400	3.87 x 11.00	98.30 x 279.40	4	101.6	200	45.4



CAPACITY
to 450 GPM
(102 m³/h)



PRESSURE
to 500 PSI
(34 BAR)



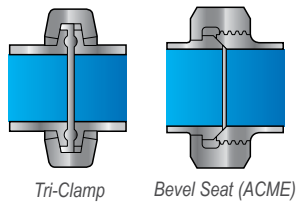
VISCOSITY
to 910,000 SSU
(200,000 cSt)



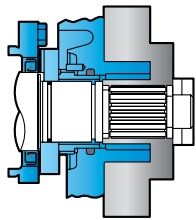
TEMPERATURE
to +300°F
(+150°C)

PORTING

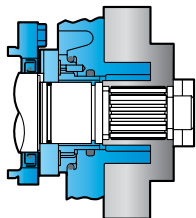
- Complete range of hygienic clamp, screw, flange & industrial screw connections
- Tri-clamp, flanged, DIN, IMDA, NPT, BSP, etc.



SEALING



- Single Mechanical
 - Standard Seal Faces: *SiC/SiC*
 - Standard O-rings & Cover Seals: *Buna/FDA*
 - Optional Faces: *Carbon, Ceramic or Chrome Oxide*
 - Optional O-rings & Cover Seals: *FKM, EPDM, Silicone*



- Double Mechanical with Flush
 - Standard Seal Faces: *SiC/SiC/C*
 - Standard O-rings & Cover Seals: *Buna/FDA*
 - Optional Faces: *Carbon, Ceramic or Chrome Oxide*
 - Optional O-rings & Cover Seals: *FKM, EPDM, Silicone*

CIP FEATURES AVAILABLE

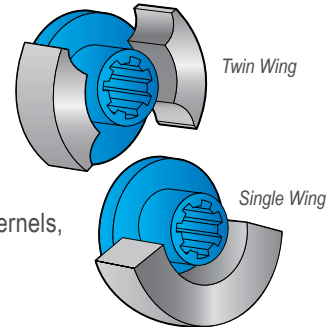
- Flat body profile
- CIP holes in body and rotors
- Vertical port mounting
- Extra clearance rotors

GEAR BOX

- Powder-coated standard
- 304 stainless steel optional

ROTOR & CASING OPTIONS

- 316 stainless steel pump casing standard w/ interior finished to 3-A standards
- Non-galling WFT 808® nickel alloy rotors standard or 316 stainless steel rotors optional
- Optional clearances: front face, hot, high temperature/high viscosity (chocolate)
- Clean In Place (CIP) & flat body profile available
- Twin Wing Rotors Standard
 - Suitable for all liquids, provides minimum pulsation
- Single Wing Rotors Optional
 - Provides reduced shear on shear sensitive fluids or large solids such as fruit pieces, nut kernels, cheese curds or meats



MOUNTING

- A gear case that can be mounted in any of four positions allows for horizontal or vertical porting, flexibility in drive shaft positioning to match reducer or gear motor input & improved access to grease fittings

TYPICAL APPLICATIONS

- Dairy
- Foods
- Pharmaceutical
- Bakery
- Confectionary
- Meat Processing
- Personal Care

WHY REMANUFACTURE?

- Worn pump is returned to **like-new condition & performance**
- Your remanufactured pump carries a **full 1 year factory warranty**
- All remanufactured pumps are **tested & certified**
- Save big** compared to purchasing an entirely new pump
- Pumps can be remanufactured **up to four times**, depending on model & wear

VIKING PUMP®

VIKING PUMP, INC.
A Unit of IDEX Corporation
406 State Street
Cedar Falls, Iowa 50613 U.S.A.
vikingpump.com

CONTACT YOUR STOCKING DISTRIBUTOR TODAY

GLOBAL LEADER IN POSITIVE DISPLACEMENT PUMPING SOLUTIONS: Cedar Falls, Iowa, USA | Windsor, Ontario, Canada | Shannon, Ireland | Eastbourne, United Kingdom

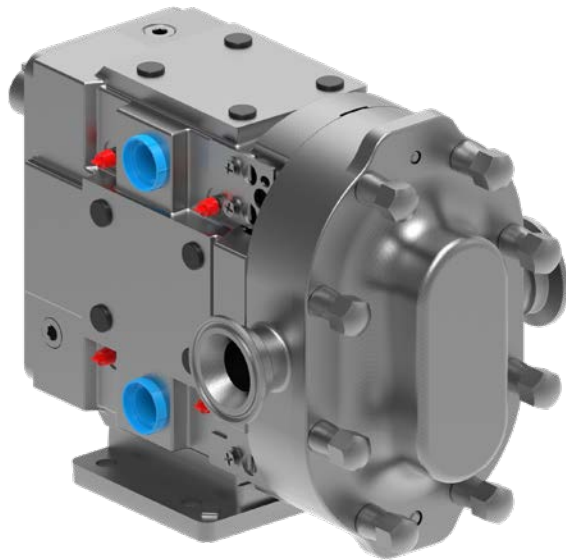
IDEX

© Copyright 2022 Viking Pump, Inc. All Rights Reserved. Rev0322 | Form No. 1721



TRA®10 SERIES™

CIRCUMFERENTIAL PISTON PRODUCT LINE



FEATURES & BENEFITS

CLEANABILITY

- Easy disassembly for easy COP (Clean Out of Place)
- Designed to 3A standards

PERFORMANCE

- Efficient handling for low & high viscosity applications
- Exclusive, non-galling WFT 808® alloy rotors standard; permits running at tighter clearances
- High strength 17-4 PH single piece shaft standard on 0300 and larger
- Helical gears, improving load carrying capabilities

EASE OF MAINTENANCE

- Drop-in-place with TRA®20 & comparable manufacturer models
- Interchangeable service parts with comparable manufacturer models
- Easy disassembly

PERFORMANCE

MODELS

Model	Displacement		Max Pressure		Max Speed	Standard Ports		Max Capacity	
	USG/rev.	l/rev.	PSI	BAR	RPM	In	mm	GPM	m³/h
0060	0.008	0.03	200	14	800	1.5	38	6	1.3
0150	0.014	0.052	200	14	700	1.5	38	9	2
0180	0.03	0.11	200	14	600	1.5	38	17	3.8
0300	0.06	0.23	200	14	600	1.5	38	36	8.2
0450	0.1	0.38	400	27	600	2	51	59	13.3
0600	0.15	0.58	200	14	600	2.5	64	90	20.4
1300	0.25	0.96	200	14	600	3	76	150	34.1
2200	0.52	1.98	200	14	600	4	102	310	70.4
3200	0.75	2.85	200	14	600	6	152	450	102

RECTANGULAR FLANGE MODELS

Model	Displacement		Max Pressure		Max Speed	Inlet (WxL)		Outlet		Max Capacity	
	USG/rev.	l/rev.	PSI	BAR	RPM	In	mm	In	mm	GPM	m³/h
0340	0.06	0.22	200	14	400	1.75 x 6.75	44.50 x 171.45	2	50.8	24	5.4
0640	0.15	0.57	200	14	400	2.24 x 8.82	56.90 x 224.03	2.5	57.2	60	13.6
1340	0.25	0.96	200	14	400	2.97 x 9.25	75.44 x 234.95	3	76.2	100	22.7
2240	0.52	1.97	200	14	400	3.87 x 11.00	98.30 x 279.40	4	101.6	200	45.4



CAPACITY
to 450 GPM
(102 m³/h)



PRESSURE
to 400 PSI
(27 BAR)



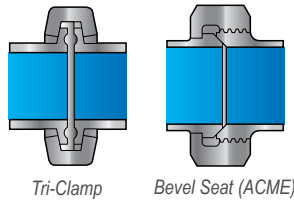
VISCOSITY
to 910,000 SSU
(200,000 cSt)



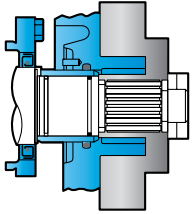
TEMPERATURE
to +300°F
(+150°C)

PORTING

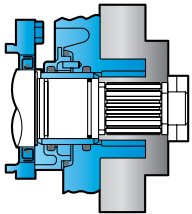
- Complete range of hygienic clamp, screw, flange & industrial screw connections
- Tri-clamp, flanged, DIN, IMDA, NPT, BSP, etc.



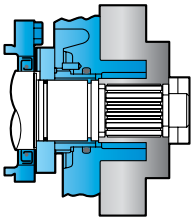
SEALING



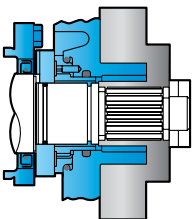
- Single O-ring
 - Standard O-rings & Cover Seals: *Buna/FDA*
 - Optional O-rings & Cover Seals: *FKM, EPDM, Silicone*



- Double O-ring with Flush
 - Standard O-rings & Cover Seals: *Buna/FDA*
 - Optional O-rings & Cover Seals: *FKM, EPDM, Silicone*



- Single Mechanical
 - Standard Seal Faces: *SiC/SiC*
 - Standard O-rings & Cover Seals: *Buna/FDA*
 - Optional Faces: *Carbon, Ceramic or Chrome Oxide*
 - Optional O-rings & Cover Seals: *FKM, EPDM, Silicone*



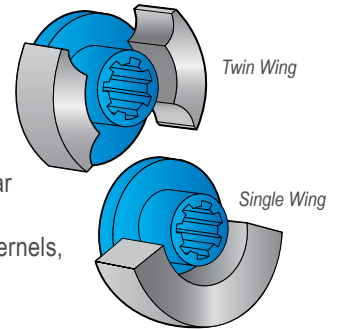
- Double Mechanical with Flush
 - Standard Seal Faces: *SiC/SiC/C*
 - Standard O-rings & Cover Seals: *Buna/FDA*
 - Optional Faces: *Carbon, Ceramic or Chrome Oxide*
 - Optional O-rings & Cover Seals: *FKM, EPDM, Silicone*

GEAR BOX

- Powder-coated standard
- 304 stainless steel optional

ROTOR & CASING OPTIONS

- 316 stainless steel pump casing standard w/ interior finished to 3-A standards
- Non-galling WFT 808® nickel alloy rotors standard or 316 stainless steel rotors optional
- Optional clearances: front face, hot, high temperature/high viscosity (chocolate)
- Twin Wing Rotors Standard
 - Suitable for all liquids, provides minimum pulsation
- Single Wing Rotors Optional
 - Standard Provides reduced shear on shear sensitive fluids or large solids such as fruit pieces, nut kernels, cheese curds or meats



MOUNTING

- A gear case that can be mounted in any of four positions allows for horizontal or vertical porting, flexibility in drive shaft positioning to match reducer or gear motor input & improved access to grease fittings

TYPICAL APPLICATIONS

- Dairy
- Bakery
- Meat Processing
- Foods
- Confectionary
- Paints
- Chemical

WHY REMANUFACTURE?

- Worn pump is returned to **like-new condition & performance**
- Your remanufactured pump carries a **full 1 year factory warranty**
- All remanufactured pumps are **tested & certified**
- Save big** compared to purchasing an entirely new pump
- Pumps can be remanufactured **up to four times**, depending on model & wear

VIKING PUMP®

VIKING PUMP, INC.
A Unit of IDEX Corporation
406 State Street
Cedar Falls, Iowa 50613 U.S.A.
vikingpump.com

CONTACT YOUR STOCKING DISTRIBUTOR TODAY

GLOBAL LEADER IN POSITIVE DISPLACEMENT PUMPING SOLUTIONS: Cedar Falls, Iowa, USA | Windsor, Ontario, Canada | Shannon, Ireland | Eastbourne, United Kingdom

IDEX

© Copyright 2022 Viking Pump, Inc. All Rights Reserved. Rev0322 | Form No. 1722



CLASSIC+ SERIES™

ROTARY LOBE PRODUCT LINE



FEATURES & BENEFITS

CLEANABILITY

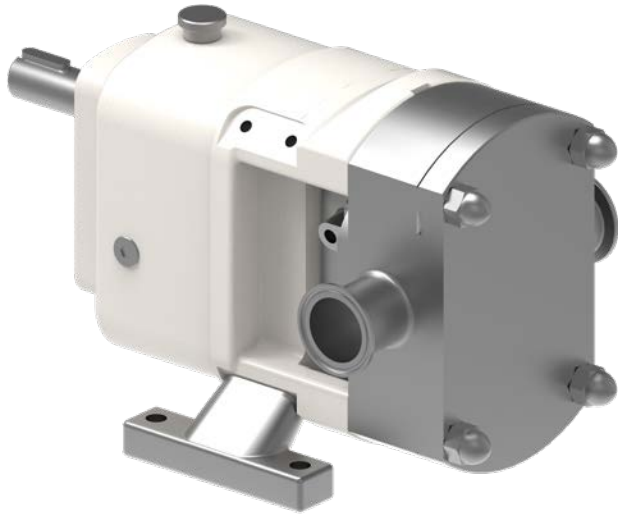
- Modular pump design promotes easy disassembly for COP (Clean Out of Place) & CIP (Clean In Place)
- Casing profile cusps maximize efficiency & draining capability

PERFORMANCE

- Timed, non-contacting rotors minimize shear while providing extended run-dry capability
- Helical timing gears provide high torque & quieter operation for extended pump life
- Tapered roller bearings provide higher operating speeds & better discharge pressures

EASE OF MAINTENANCE

- Removable foot for easier placement
- Classic RLP design



PERFORMANCE

MODELS

Model	Displacement		Max Pressure		Max Speed	Standard Ports		Max Capacity		Max Temperature	
	USG/rev.	l/rev.	PSI	BAR	RPM	In	mm	GPM	m³/h	°F	°C
10/0005/12	0.0122	0.046	174	12	1400	1	25	17.1	3.9	300	150
10/0008/08	0.0219	0.083	115	8	1400	1 1/2	38	30.7	7	300	150
10/0011/05	0.0293	0.111	70	5	1400	1 1/2	38	41	9.3	300	150
20/0020/12	0.0534	0.202	174	12	1000	1 1/2	38	53.4	12.1	300	150
20/0031/07	0.0827	0.313	100	7	1000	2	50	82.7	18.8	300	150
30/0069/12	0.1834	0.694	174	12	750	2	50	137.6	31.2	300	150
30/0113/07	0.2972	1.125	100	7	750	3	76	222.9	50.6	300	150
40/0180/12	0.4756	1.8	174	12	700	3	76	332.9	75.6	300	150
40/0250/07	0.6605	2.5	100	7	700	4	101	462.4	105	300	150
50/0351/12	0.9284	3.514	174	12	650	4	101	603.5	137	355	180
50/0525/08	1.387	5.25	115	8	600	6	150	832.2	189	355	180



CAPACITY
to 832 GPM
(189 m³/h)



PRESSURE
to 174 PSI
(12 BAR)



VISCOSITY
to 910,000 SSU
(200,000 cSt)



TEMPERATURE
to +355°F
(+180°C)

PORTING

- Complete range of hygienic clamp, screw, flange & industrial screw connections
- Tri-clamp, flanged, DIN, IMDA, NPT, BSP, etc.

SEALING

- Single O-ring
- Single mechanical
- Single mechanical with flush or quench
- Double mechanical with flush
- Gland packing
- Gland packing with lantern ring with flush
- Complete range of material options

GEAR BOX

- Powder-coated or painted standard (size dependent)

ROTOR & CASING OPTIONS

- 316L stainless steel pump casing with interior finished to 3-A standards
- 316L stainless steel rotors
- Improved surface finishes & electropolishing optional
- Front cover jacket or rotor case saddles

TYPICAL APPLICATIONS

- Pharmaceutical
- Personal Care
- Foods
- Beverage
- Dairy
- Confectionary
- Chemical

BENEFITS OF MAINTENANCE KITS:

- Everything you need in one place
- Reduce frequency of repairs
- Increase service life
- Increase uptime
- Save time & money
- Kits include exploded diagram & parts list



REBUILD VS. REPLACE

- Kits are designed to save time & money, making preventive maintenance easier & more cost-effective
- Pumps are designed & built to the highest standards, for long life & to be rebuilt instead of replaced when applicable
- Tool kits also available

VIKING PUMP®

VIKING PUMP, INC.
A Unit of IDEX Corporation
406 State Street
Cedar Falls, Iowa 50613 U.S.A.
vikingpump.com

CONTACT YOUR STOCKING DISTRIBUTOR TODAY

GLOBAL LEADER IN POSITIVE DISPLACEMENT PUMPING SOLUTIONS: Cedar Falls, Iowa, USA | Windsor, Ontario, Canada | Shannon, Ireland | Eastbourne, United Kingdom

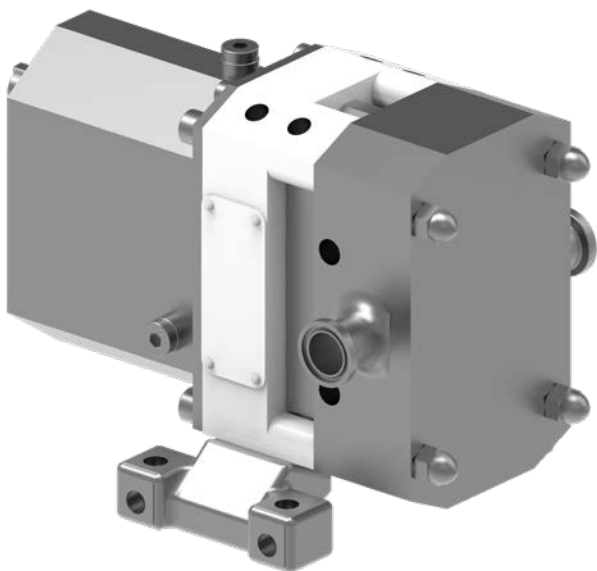
IDEX

© Copyright 2022 Viking Pump, Inc. All Rights Reserved. Rev0522 | Form No. 1723



STERILOBE® SERIES

ROTARY LOBE PRODUCT LINE



FEATURES & BENEFITS

CLEANABILITY

- Cover joint profile improves hygienic characteristics & self-draining capabilities
- Clean & corrosion resistant stainless gear cover & powder coated bearing housing

EASE OF MAINTENANCE

- Front loading seals can be changed while the pump is still in-line
- Seal positioned for optimal lubrication, maximizing seal life
- Hassle free gearbox maintenance with sealed for life bearings

PERFORMANCE

- Standard bi-wing rotors offer application flexibility & good solids handling capabilities
- Multi-lobe rotors reduce shear & pulsation effect; ideal for sensitive media
- Innovative cusps with reliefs allow for easier cleaning and self draining with improved efficiency

PERFORMANCE

MODELS

Model	Displacement		Max Pressure		Max Speed	Standard Ports		Max Capacity	
	USG/rev.	l/rev.	PSI	BAR	RPM	In	mm	GPM	m³/h
SLAS	0.0103	0.039	218	15	1400	.75	19	14	3.18
SLAL	0.0156	0.059	145	10	1400	1	25	22	5
SLBS	0.0214	0.081	218	15	1200	1	25	25.7	5.8
SLBL	0.0322	0.122	145	10	1200	1.5	38	38.7	8.8
SLCS	0.0446	0.169	218	15	1200	1.5	38	53.6	12.2
SLCL	0.0671	0.254	145	10	1200	2	50	80.5	18.3
SLDS	0.093	0.352	218	15	1000	1.5	38	93	20.5
SLDL	0.1395	0.528	145	10	1000	2	50	139.5	31.7
SLES	0.1934	0.732	218	15	800	2	50	154.7	35.1
SLEL	0.2903	1.099	145	10	800	3	76	232.3	52.8
SLFS	0.4026	1.542	218	15	600	3	76	241.5	54.8
SLFL	0.6036	2.285	145	10	600	4	101	362.2	82.3
SLGS	0.8374	3.17	218	15	600	4	101	502.5	114.1
SLGL	1.2559	4.754	145	10	600	6	152	753.5	171.1



CAPACITY
to 753 GPM
(171 m³/h)



PRESSURE
to 218 PSI
(15 BAR)



VISCOSITY
to 910,000 SSU
(200,000 cSt)



TEMPERATURE
to +300°F
(+150°C)

PORTING

- Complete range of hygienic clamp, screw, flange & industrial screw connections
- Tri-clamp, flanged, DIN, IMDA, NPT, BSP, etc.

SEALING

- Single mechanical
- Single mechanical with flush or quench
 - Standard Seal Faces: *C/SiC*
 - Standard O-rings & Cover Seals: *EPDM/FDA*
 - Optional Faces: *SiC/SiC*
 - Optional O-rings & Cover Seals: *FKM, Buna, Silicone, FFKM*
- Double mechanical with flush
 - Seal Faces: *C/SiC/SiC/C* or *SiC/SiC/SiC/C*
 - Standard O-rings & Cover Seals: *EPDM/FDA*
 - Optional Faces: *SiC/SiC*
 - Optional O-rings & Cover Seals: *FKM, Buna, Silicone, FFKM*

ROTOR & CASING OPTIONS

- 316L stainless steel pump casing with interior finished to Ra of 24µin (0.6µm).
- 316L stainless steel rotors
- 1.4435 low ferrite stainless steel optional
- Improved surface finishes & electropolishing optional
- Bi-wing rotors standard
 - No timing required
 - Preferred for large solids such as fruit pieces, nut kernels, cheese curds or meats
- Multilobe rotors optional
 - Provides reduced shear on shear sensitive fluids
 - Improved performance on thin liquids resulting in less pulsation at higher pressures

OPTIONAL COMPLIANCE CERTIFICATION DOCUMENTATION & PERFORMANCE TESTS

- Pump Performance
- Media Contact Elastomers
- Certified Documents
- General Compliance
- Seal Face
- ATEX & CE
- Media Contact Metallic Components
- Surface Finish
- Pump Assembly Inspection

TYPICAL APPLICATIONS

- Pharmaceutical
- Beverage
- Chemical
- Personal Care
- Dairy
- Foods
- Confectionary

BENEFITS OF MAINTENANCE KITS

- Everything you need in one place
- Reduce frequency of repairs
- Increase service life
- Increase uptime
- Save time & money
- Kits include exploded diagram & parts list



REBUILD VS. REPLACE

- Kits are designed to save time & money, making preventive maintenance easier & more cost-effective
- Pumps are designed & built to the highest standards, for long life & to be rebuilt instead of replaced when applicable
- Tool kits also available

VIKING PUMP®

VIKING PUMP, INC.
A Unit of IDEX Corporation
406 State Street
Cedar Falls, Iowa 50613 U.S.A.
vikingpump.com

CONTACT YOUR STOCKING DISTRIBUTOR TODAY

GLOBAL LEADER IN POSITIVE DISPLACEMENT PUMPING SOLUTIONS: Cedar Falls, Iowa, USA | Windsor, Ontario, Canada | Shannon, Ireland | Eastbourne, United Kingdom

IDEX

© Copyright 2022 Viking Pump, Inc. All Rights Reserved. Rev0522 | Form No. 1725



RTP® SERIES™

ROTARY LOBE PRODUCT LINE



FEATURES & BENEFITS

CLEANABILITY

- ▮ The simple design behind the rotor makes strip cleaning easy and fast
- ▮ Choose the cleaning process that fits your needs: COP (Clean Out of Place) or CIP (Clean In Place)

EASE OF MAINTENANCE

- ▮ Innovative front loading seal design enables quick inspection and easy servicing
- ▮ Sealed gearcase with long-life lubrication eliminates oil inspection and filling
- ▮ Easy to service design requires no special tools for disassembly and eliminates need for end clearance adjustments

PERFORMANCE

- ▮ Easily handles higher viscosity liquids with improved pressure capabilities for faster unloading
- ▮ Excellent displacement/weight ratios, meaning more in the tank & less in the cabinet
- ▮ Precision helical gears, rotors & shaft design, with optimized bearing position, minimize overhung load – extending seal & bearing life

THE COMPLETE SOLUTION FOR YOUR HYGIENIC TANKER SYSTEM

Designed specifically for the hygienic stainless steel road tanker industry, the RTP outperforms the competition by providing higher capacity, higher pressure and unmatched efficiency. The RTP can also reduce loading and unloading time by over 30%.

This increased performance, along with advanced durability, application flexibility, ease of installation and ease of maintenance provide a complete solution for your hygienic tanker needs.

PERFORMANCE

MODELS

Model	Displacement		Max Pressure		Max Speed RPM	Standard Ports		Max Capacity		Max Temperature	
	USG/rev.	l/rev.	PSI	BAR		In	mm	GPM	m³/h	°F	°C
RTP20	0.264	1	145	10	1000	2 or 3	50 or 75	264	60	230	110
RTP30	0.338	1.28	174	12	1000	3 or 4	75 or 100	338	76.8	300	150



CAPACITY
to 338 GPM
(76.8 m³/h)



PRESSURE
to 174 PSI
(12 BAR)



VISCOSITY
to 910,000 SSU
(200,000 cSt)



TEMPERATURE
to +300°F
(+150°C)

PORTING

- Camlock, ACME & DIN 11851 ports available

SEALING

- Single / Double O-ring
- Dry-run capable composite O-ring seals
- Mechanical seals
- Complete range of material options

GEAR BOX

- Ingress protected and sealed lightweight aluminum gearbox

ROTOR & CASING OPTIONS

- 316L stainless steel pump casing standard with interior finished to 3-A standards
- High efficiency rotors for low viscosity fluids

MOUNTING

- SAE 2 & 4 bolt mounting flange for close coupled hydraulic drive applications

OPTIONS

- Optional pressure relief valve to protect pump against excess pressure spikes

TYPICAL APPLICATIONS

- High Fructose Corn Syrup
- Chocolate
- Milk and Dairy
- Vinegar
- Fruit Juice
- Vegetable Oils

MAINTENANCE KITS

- Everything you need in one place
- Reduce frequency of repairs
- Increase service life
- Increase uptime
- Save time and money
- Kits include exploded diagram and parts list
- Seal, bearing and elastomer kits available



VIKING PUMP, INC.
 A Unit of IDEX Corporation
 406 State Street
 Cedar Falls, Iowa 50613 U.S.A.
vikingpump.com

GLOBAL LEADER IN POSITIVE DISPLACEMENT PUMPING SOLUTIONS: Cedar Falls, Iowa, USA | Windsor, Ontario, Canada | Shannon, Ireland | Eastbourne, United Kingdom

WHY CHOOSE THE RTP?			
Your Needs	RTP	RTPe	Competitor
FDA compliant (GRAS) & 3A Certified	✓	✗	✓
Dry-Run Capable Seal*	✓	✓	✗
Reduces loading and unloading time by over 30%	✓	✗	✗
Ingress Protected & Sealed Maintenance-Free Gearbox	✓	✓	✗
Pump design reduces overhung load, vibration, and pipe stress	✓	✓	✗
Smallest footprint and lowest weight	✓	✓	✗
Solids Handling	✓	✓	✓
All 316L Stainless Steel Wet End	✓	✓	✓
Multiple Port Options	✓	✗	✓
4-Way Mounting Feet	✓	✗	✗

✓ Yes ✗ No/Not Ideal or Limitations

* consult Representative for details

CONTACT YOUR STOCKING DISTRIBUTOR TODAY



SALES TOOLS

VERTICAL INTEGRATION



WEBSITE
VIKINGPUMP.COM



LITERATURE
VIKINGPUMP.COM/DOWNLOADS



VIDEOS
VIKINGPUMP.COM/VIKINGTV

Viking Pump operates a foundry, a 250,000+ sq. ft. machining, assembly and testing center, and an extensive product engineering and testing lab in its world headquarters in Cedar Falls, Iowa, USA. This level of vertical integration ensures maximum quality, ability to satisfy special needs, and to meet project schedules.



VIKING PUMP, INC.
A Unit of IDEX Corporation
406 State Street
Cedar Falls, Iowa 50613 U.S.A.
vikingpump.com

CONTACT YOUR STOCKING DISTRIBUTOR TODAY

ASCO Pompy sp. z o.o.
Ujastek 5b/8b, 31-752 Krakow, Poland
ascopompy.pl

Official Viking Pump Hygienic distributor in Poland

